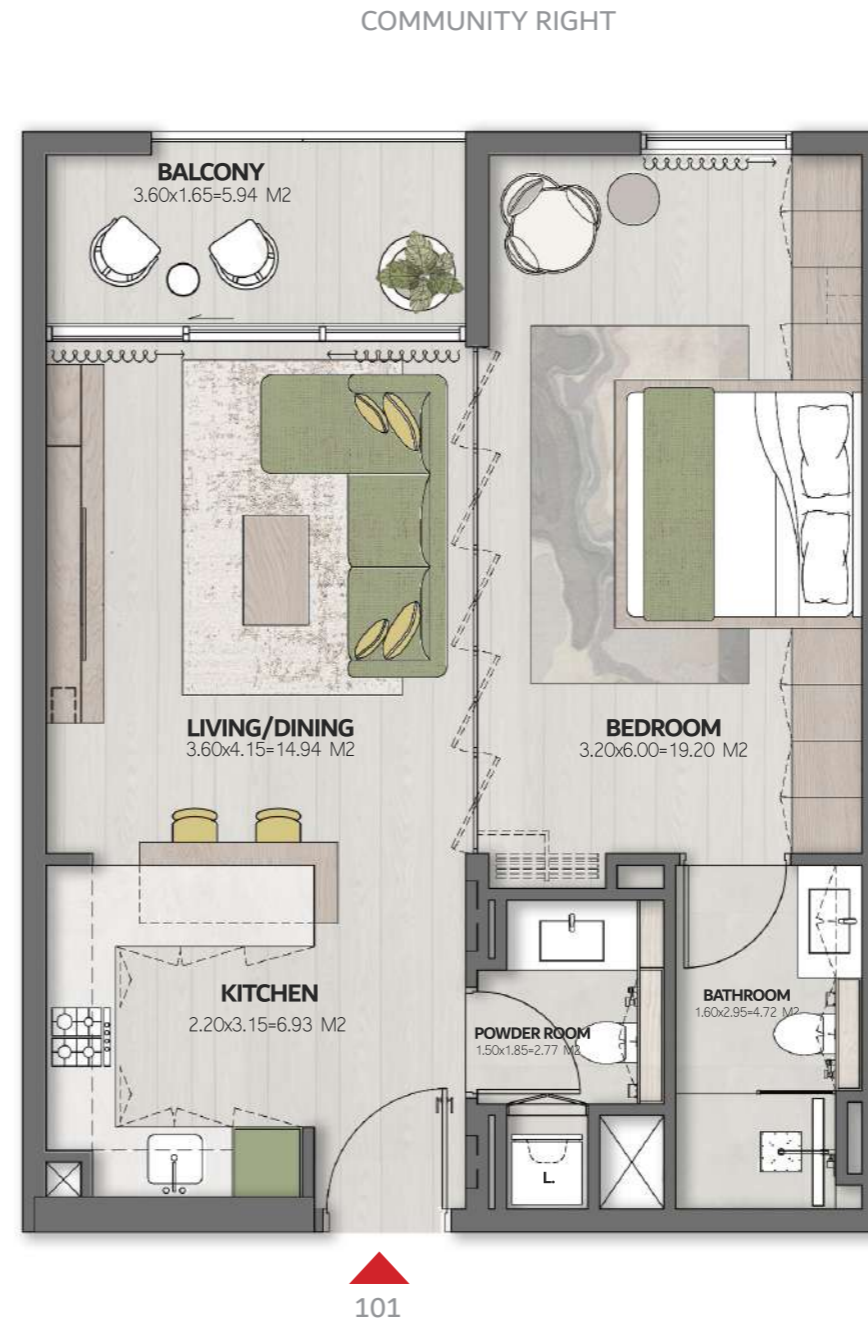
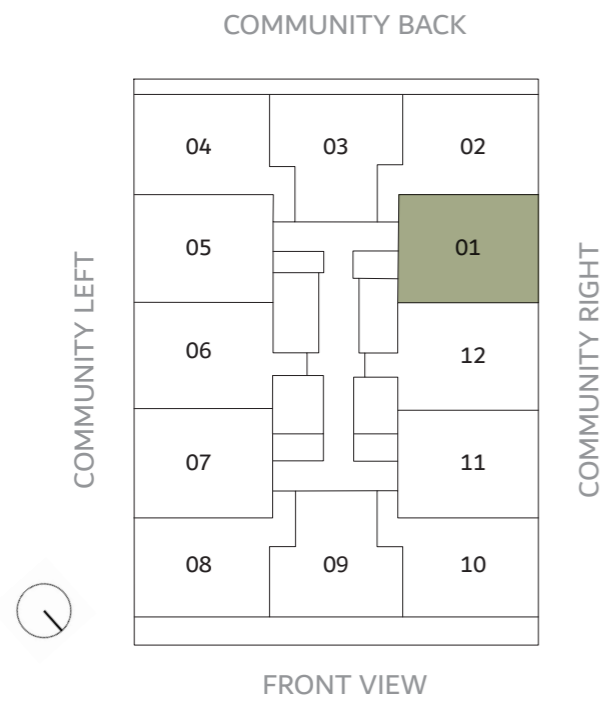


THE CUBE

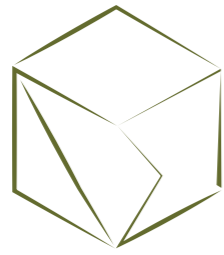
RESIDENCES

1 BEDROOM -TYPE 1

LEVEL 1	UNIT 101
SUITE AREA	639.91 FT ²
BALCONY	68.24FT ²
TOTAL AREA	708.16FT ²



Disclaimer: This document is intended for estimation purposes only. The information contained herein is subject to change and may be modified during the course of construction. The developer reserves the right to make adjustments as necessary without prior notice. Any discrepancies or variations that arise during the construction process will be addressed and resolved in accordance with the project's requirements and best practices.



THE CUBE

RESIDENCES

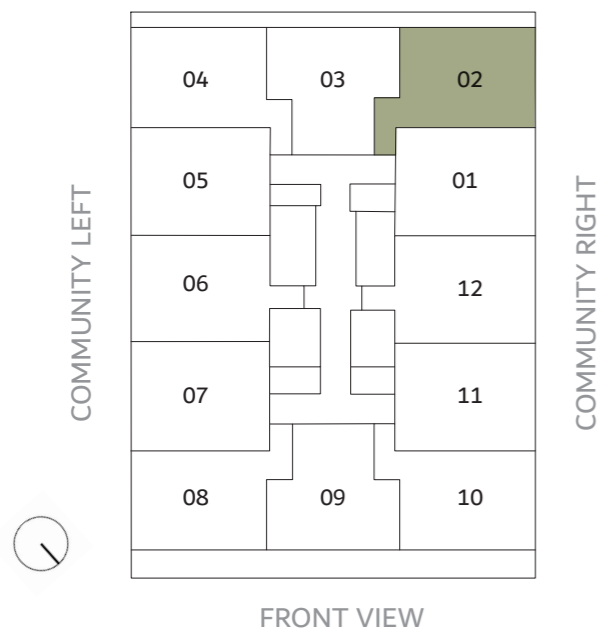
1 BEDROOM -TYPE 2

LEVEL 1	UNIT 102
SUITE AREA	689 FT ²
BALCONY	96.01 FT ²
TOTAL AREA	785.01 FT ²

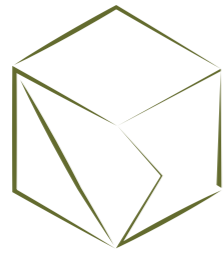
COMMUNITY BACK



COMMUNITY BACK



Disclaimer: This document is intended for estimation purposes only. The information contained herein is subject to change and may be modified during the course of construction. The developer reserves the right to make adjustments as necessary without prior notice. Any discrepancies or variations that arise during the construction process will be addressed and resolved in accordance with the project's requirements and best practices.



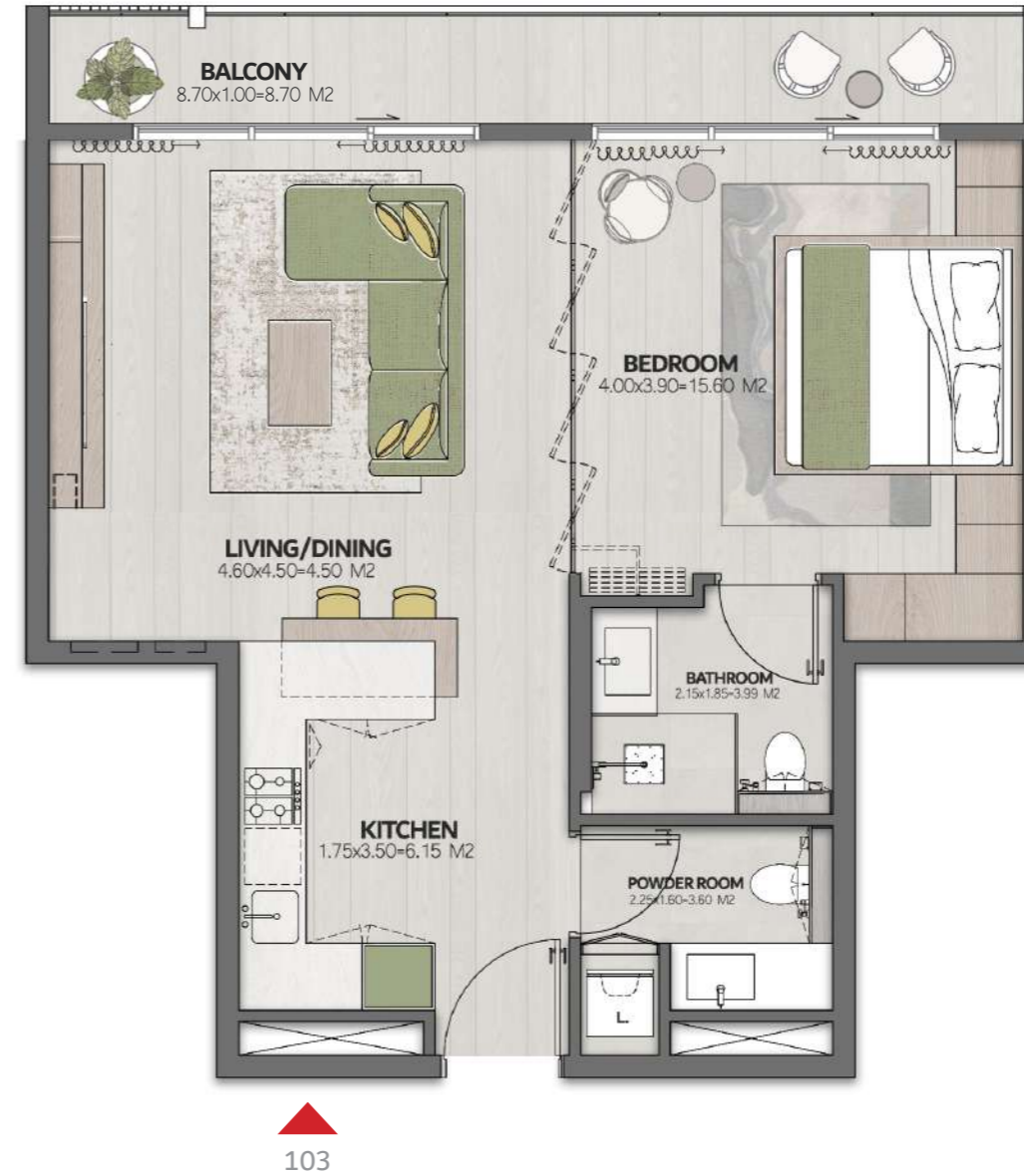
THE CUBE

RESIDENCES

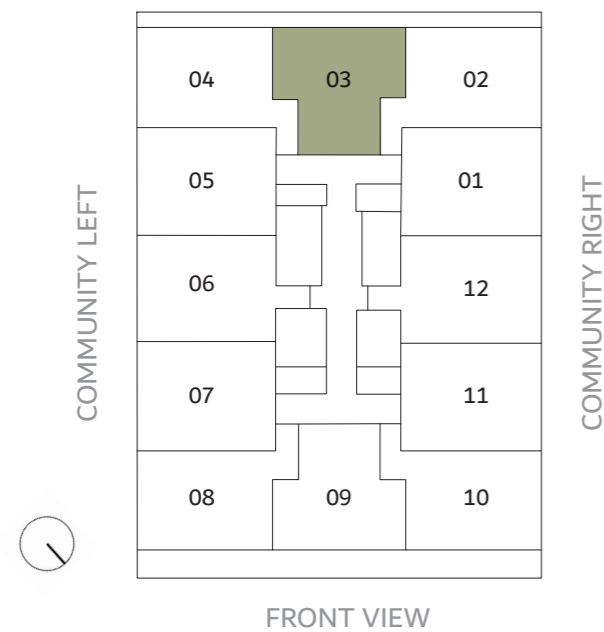
1 BEDROOM -TYPE 3

LEVEL 1	UNIT 103
SUITE AREA	653.37FT ²
BALCONY	98.17 FT ²
TOTAL AREA	751.54 FT ²

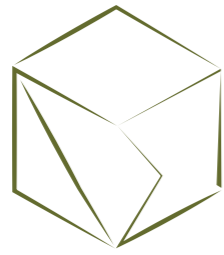
COMMUNITY BACK



COMMUNITY BACK



Disclaimer: This document is intended for estimation purposes only. The information contained herein is subject to change and may be modified during the course of construction. The developer reserves the right to make adjustments as necessary without prior notice. Any discrepancies or variations that arise during the construction process will be addressed and resolved in accordance with the project's requirements and best practices.



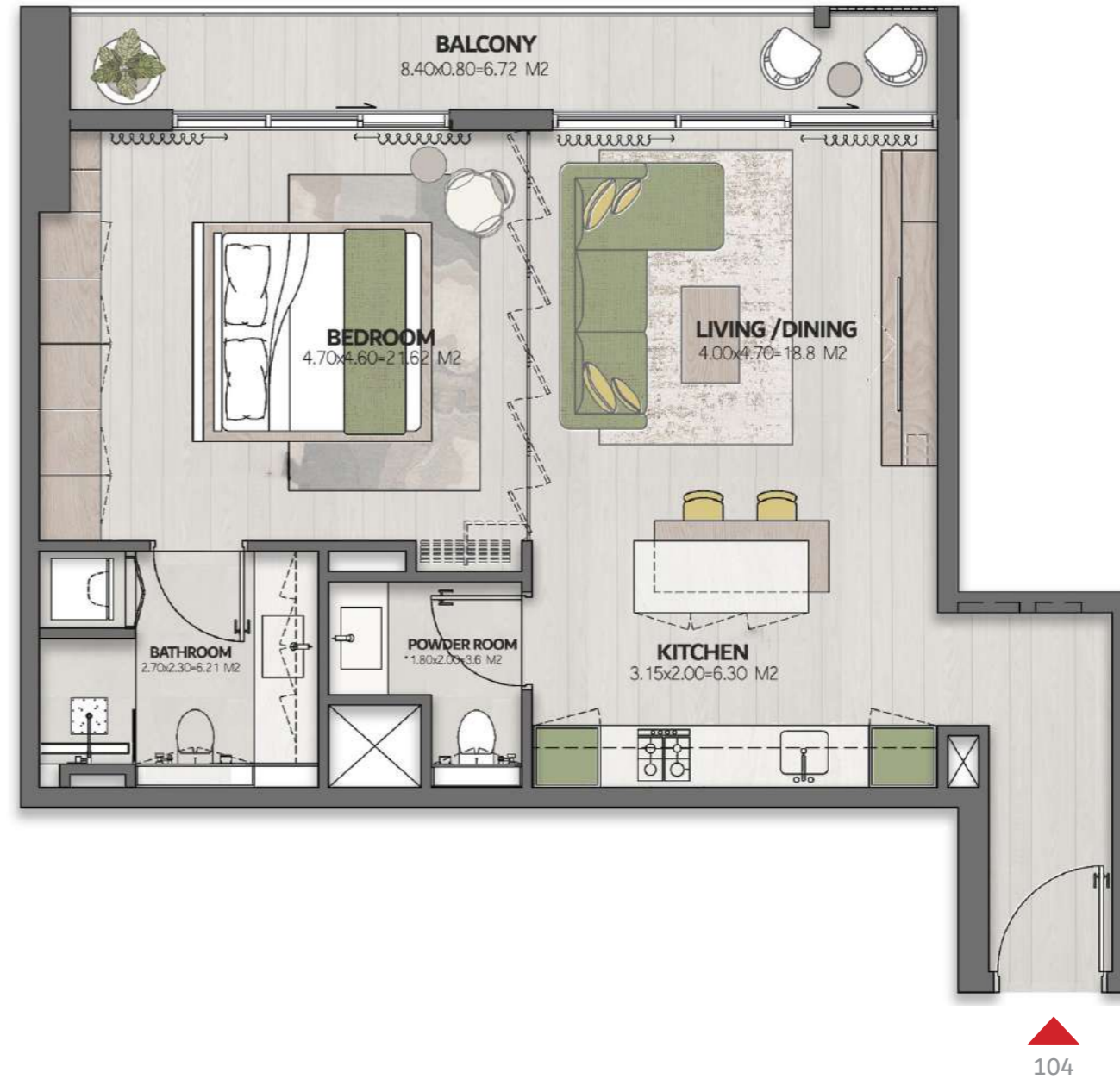
THE CUBE

RESIDENCES

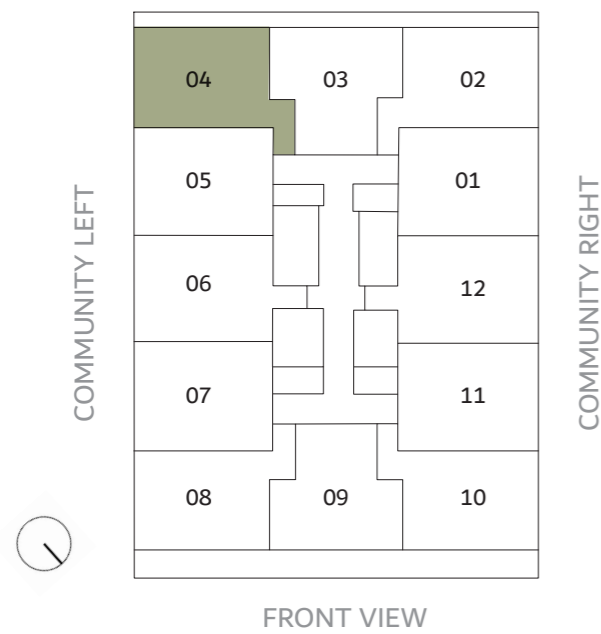
1 BEDROOM -TYPE 2

LEVEL 1	UNIT 104
SUITE AREA	689FT ²
BALCONY	96.01 FT ²
TOTAL AREA	785.01 FT ²

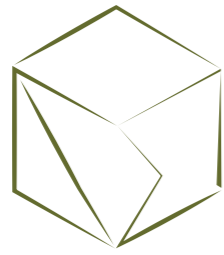
COMMUNITY BACK



COMMUNITY BACK



Disclaimer: This document is intended for estimation purposes only. The information contained herein is subject to change and may be modified during the course of construction. The developer reserves the right to make adjustments as necessary without prior notice. Any discrepancies or variations that arise during the construction process will be addressed and resolved in accordance with the project's requirements and best practices.

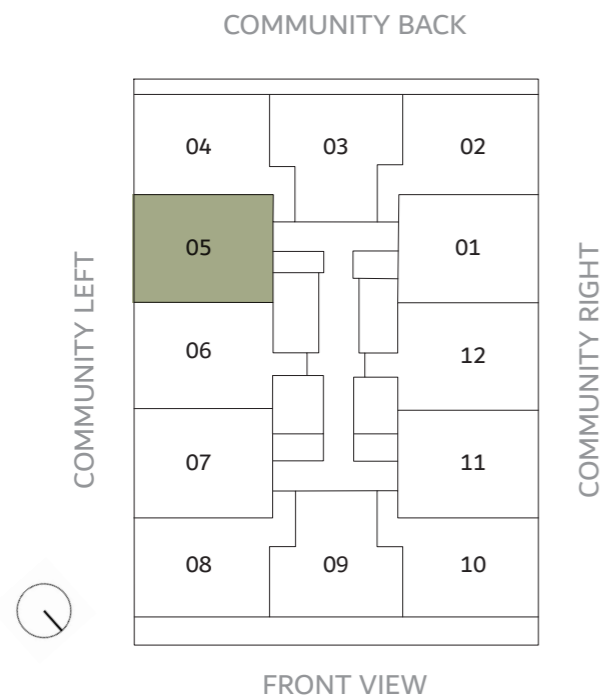


THE CUBE

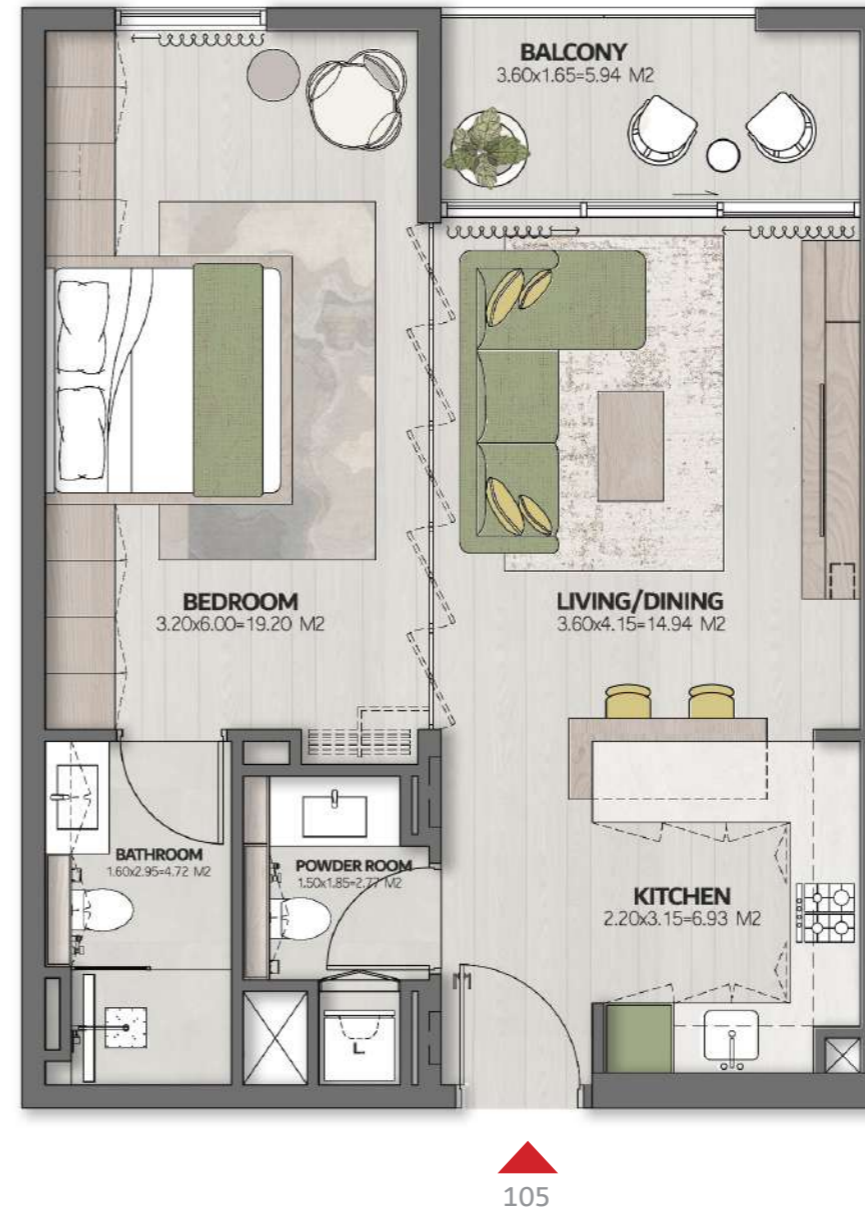
RESIDENCES

1 BEDROOM -TYPE 1

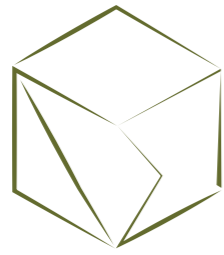
LEVEL 1	UNIT 105
SUITE AREA	639.91 FT ²
BALCONY	68.24FT ²
TOTAL AREA	708.16FT ²



COMMUNITY LEFT



Disclaimer: This document is intended for estimation purposes only. The information contained herein is subject to change and may be modified during the course of construction. The developer reserves the right to make adjustments as necessary without prior notice. Any discrepancies or variations that arise during the construction process will be addressed and resolved in accordance with the project's requirements and best practices.

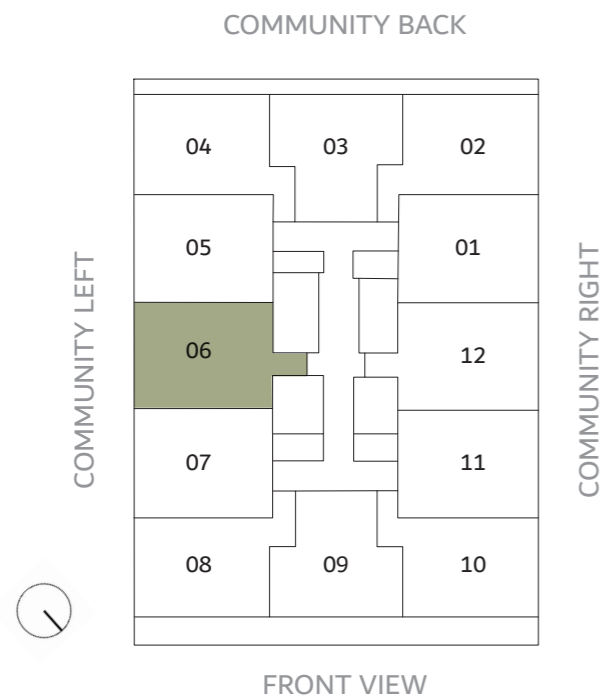


THE CUBE

RESIDENCES

1 BEDROOM -TYPE 1

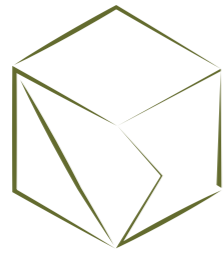
LEVEL 1	UNIT 106
SUITE AREA	681.57 FT ²
BALCONY	68.14FT ²
TOTAL AREA	749.71FT ²



COMMUNITY LEFT



Disclaimer: This document is intended for estimation purposes only. The information contained herein is subject to change and may be modified during the course of construction. The developer reserves the right to make adjustments as necessary without prior notice. Any discrepancies or variations that arise during the construction process will be addressed and resolved in accordance with the project's requirements and best practices.

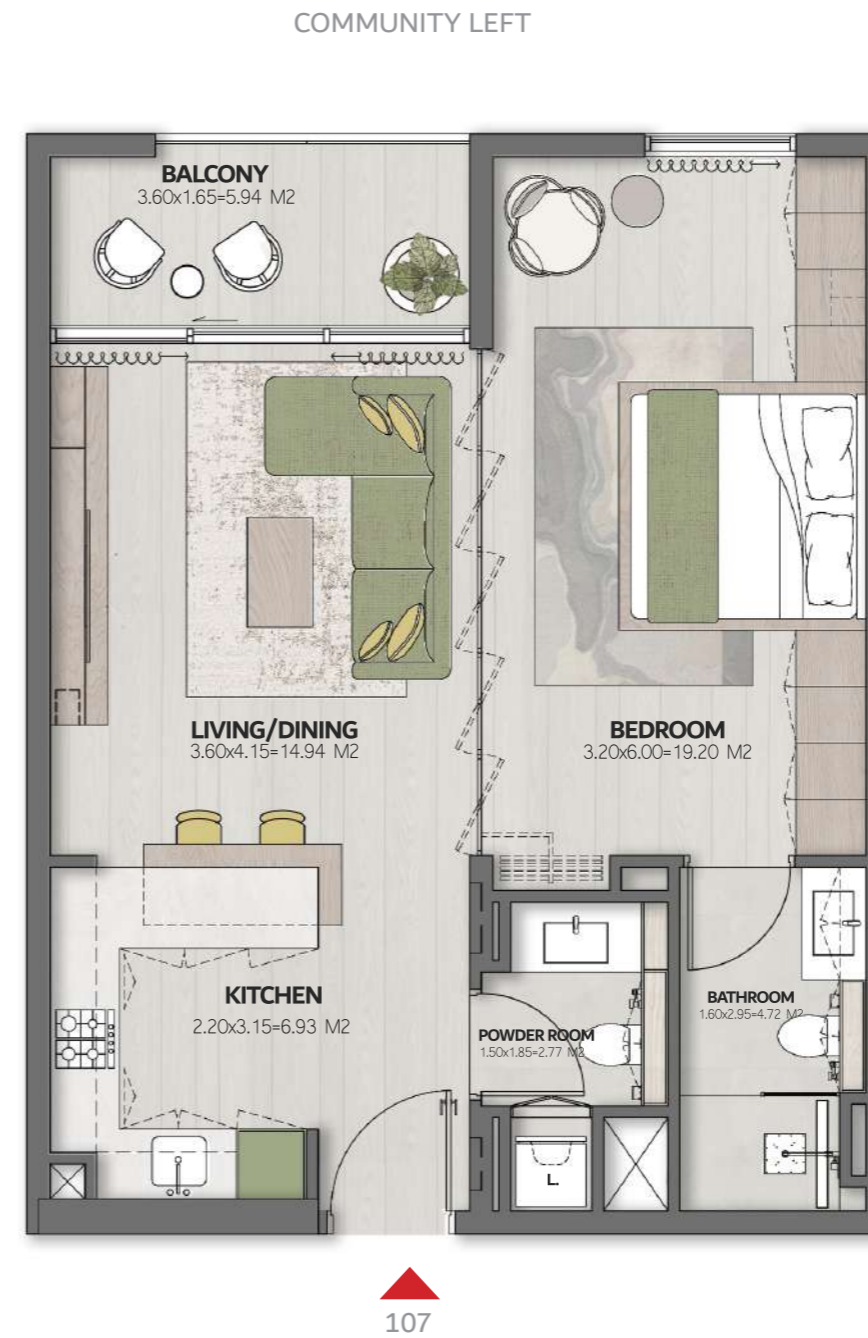
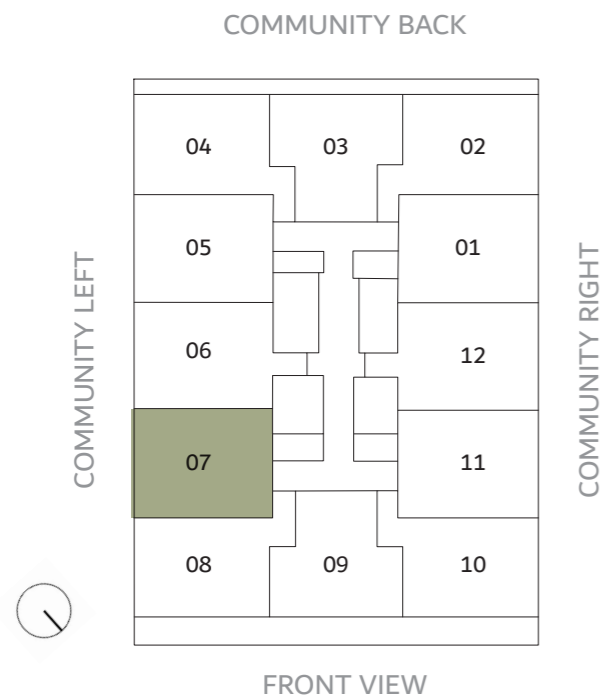


THE CUBE

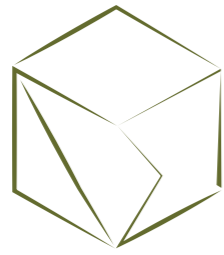
RESIDENCES

1 BEDROOM -TYPE 1

LEVEL 1	UNIT 107
SUITE AREA	639.91 FT ²
BALCONY	68.24FT ²
TOTAL AREA	708.16FT ²



Disclaimer: This document is intended for estimation purposes only. The information contained herein is subject to change and may be modified during the course of construction. The developer reserves the right to make adjustments as necessary without prior notice. Any discrepancies or variations that arise during the construction process will be addressed and resolved in accordance with the project's requirements and best practices.

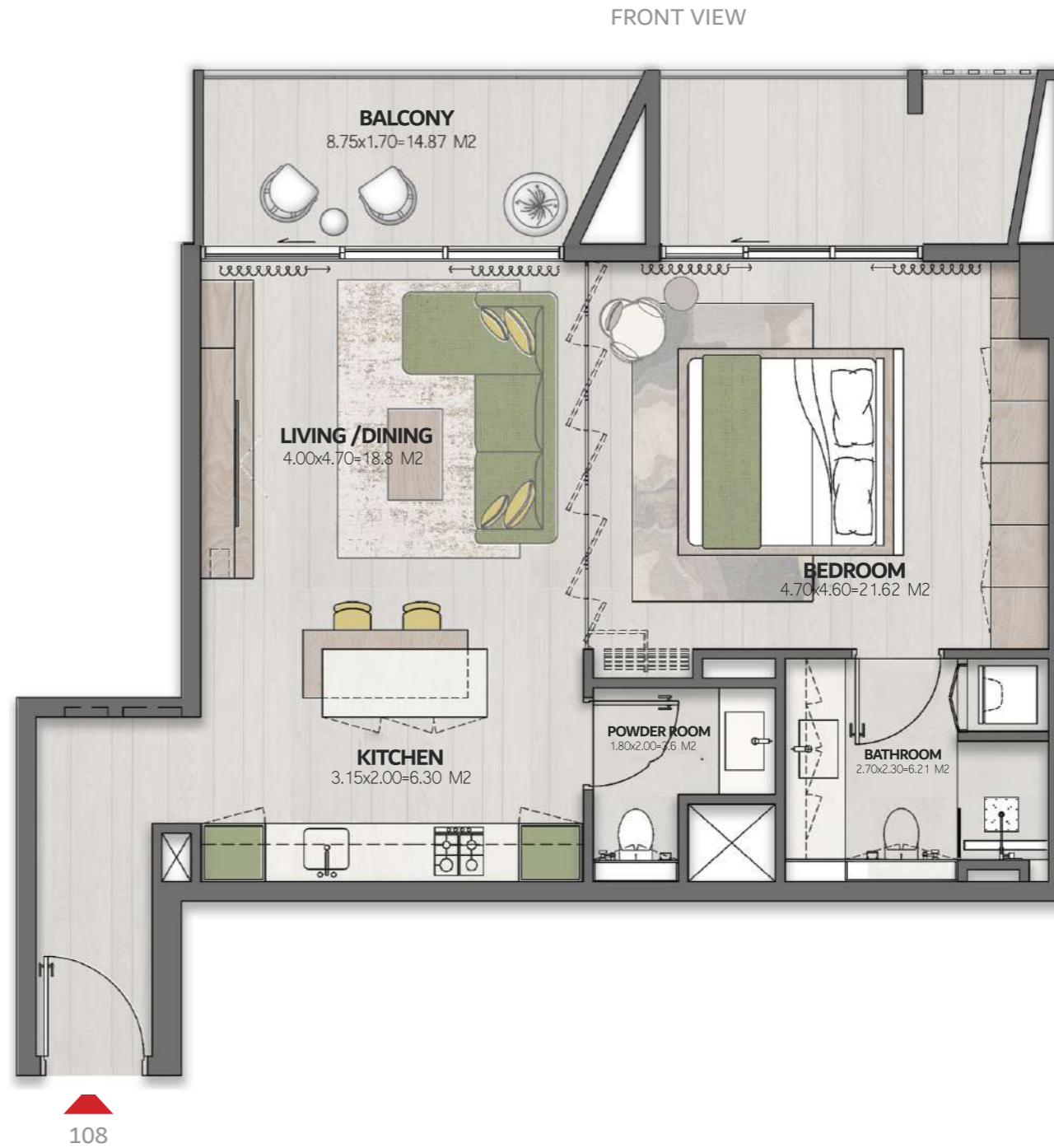
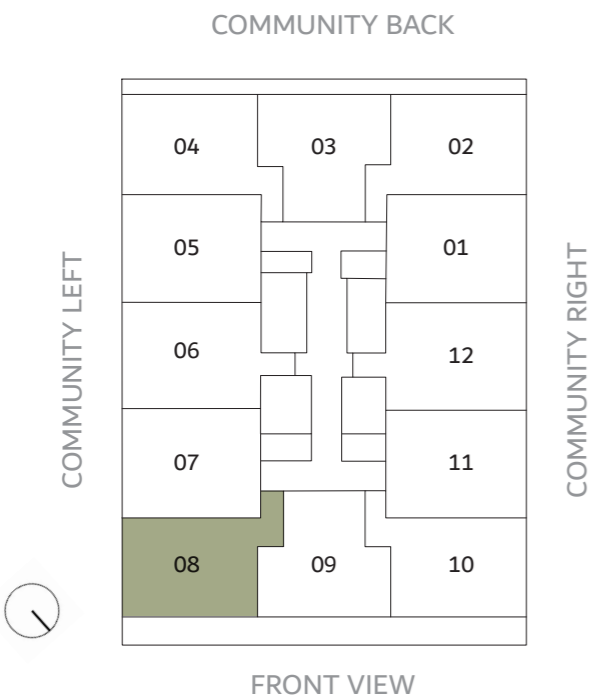


THE CUBE

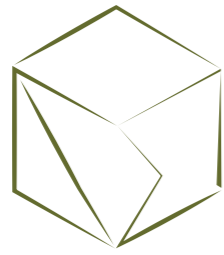
RESIDENCES

1 BEDROOM -TYPE 2

LEVEL 1	UNIT 108
SUITE AREA	689 FT ²
BALCONY	175.3 FT ²
TOTAL AREA	864.34 FT ²



Disclaimer: This document is intended for estimation purposes only. The information contained herein is subject to change and may be modified during the course of construction. The developer reserves the right to make adjustments as necessary without prior notice. Any discrepancies or variations that arise during the construction process will be addressed and resolved in accordance with the project's requirements and best practices.

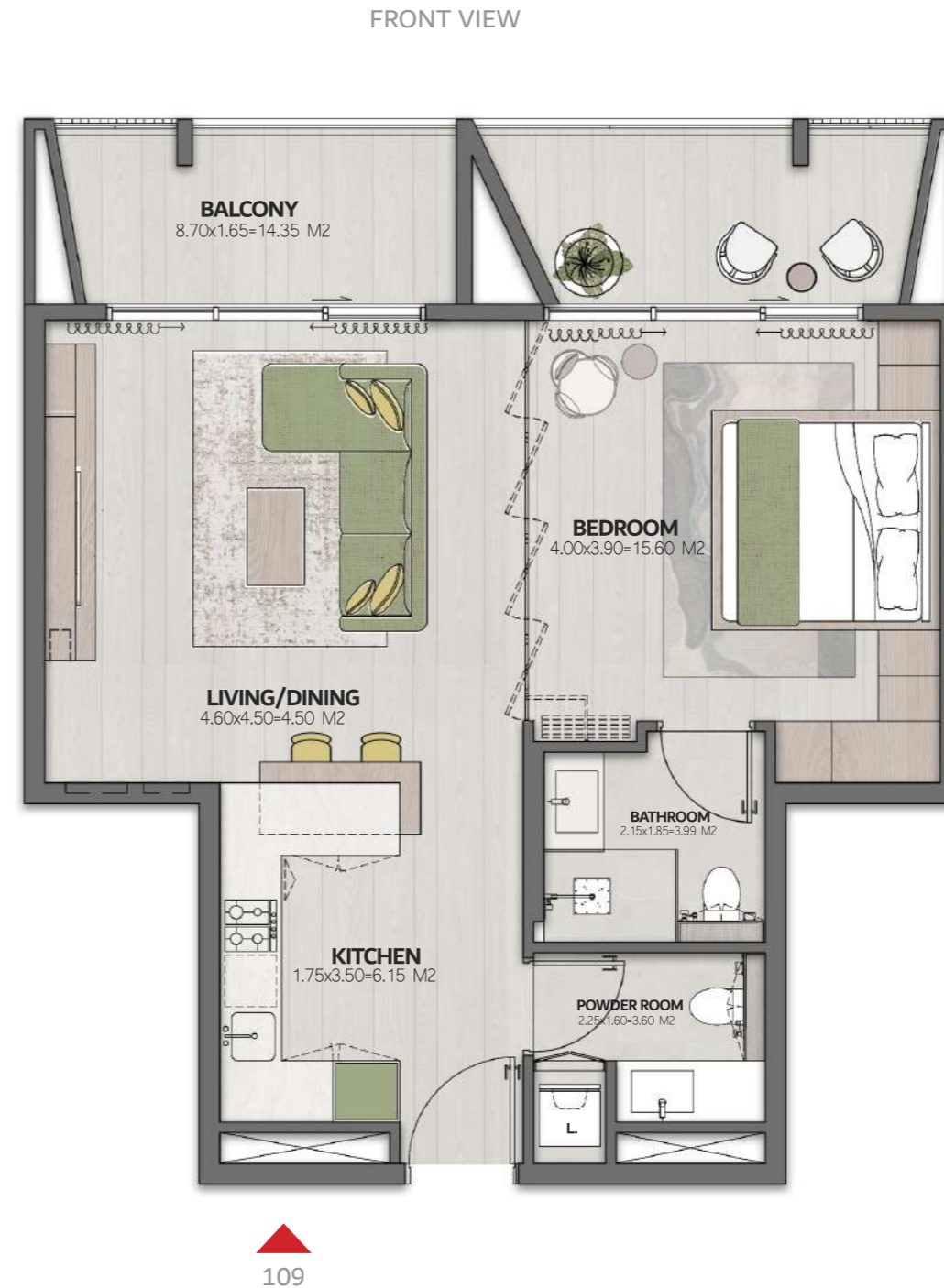
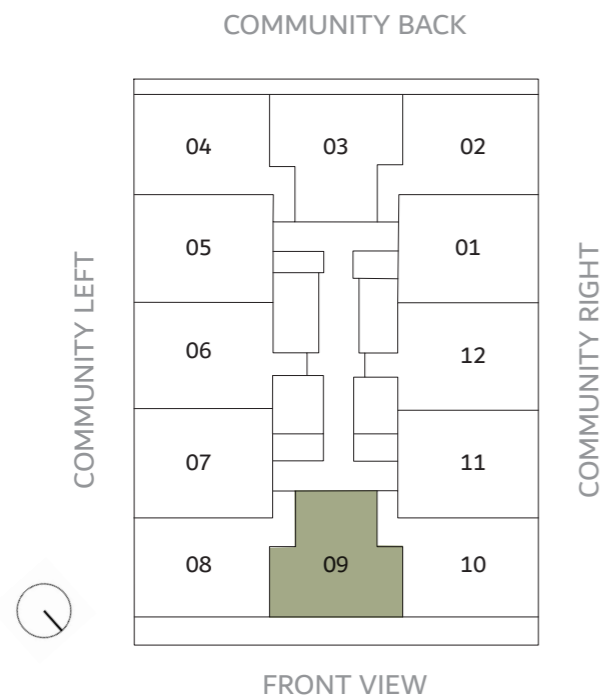


THE CUBE

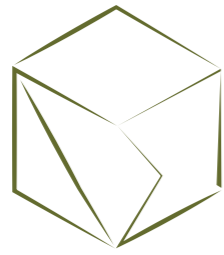
RESIDENCES

1 BEDROOM -TYPE 3

LEVEL 1	UNIT 109
SUITE AREA	653.37FT ²
BALCONY	177.80 FT ²
TOTAL AREA	831.19FT ²



Disclaimer: This document is intended for estimation purposes only. The information contained herein is subject to change and may be modified during the course of construction. The developer reserves the right to make adjustments as necessary without prior notice. Any discrepancies or variations that arise during the construction process will be addressed and resolved in accordance with the project's requirements and best practices.

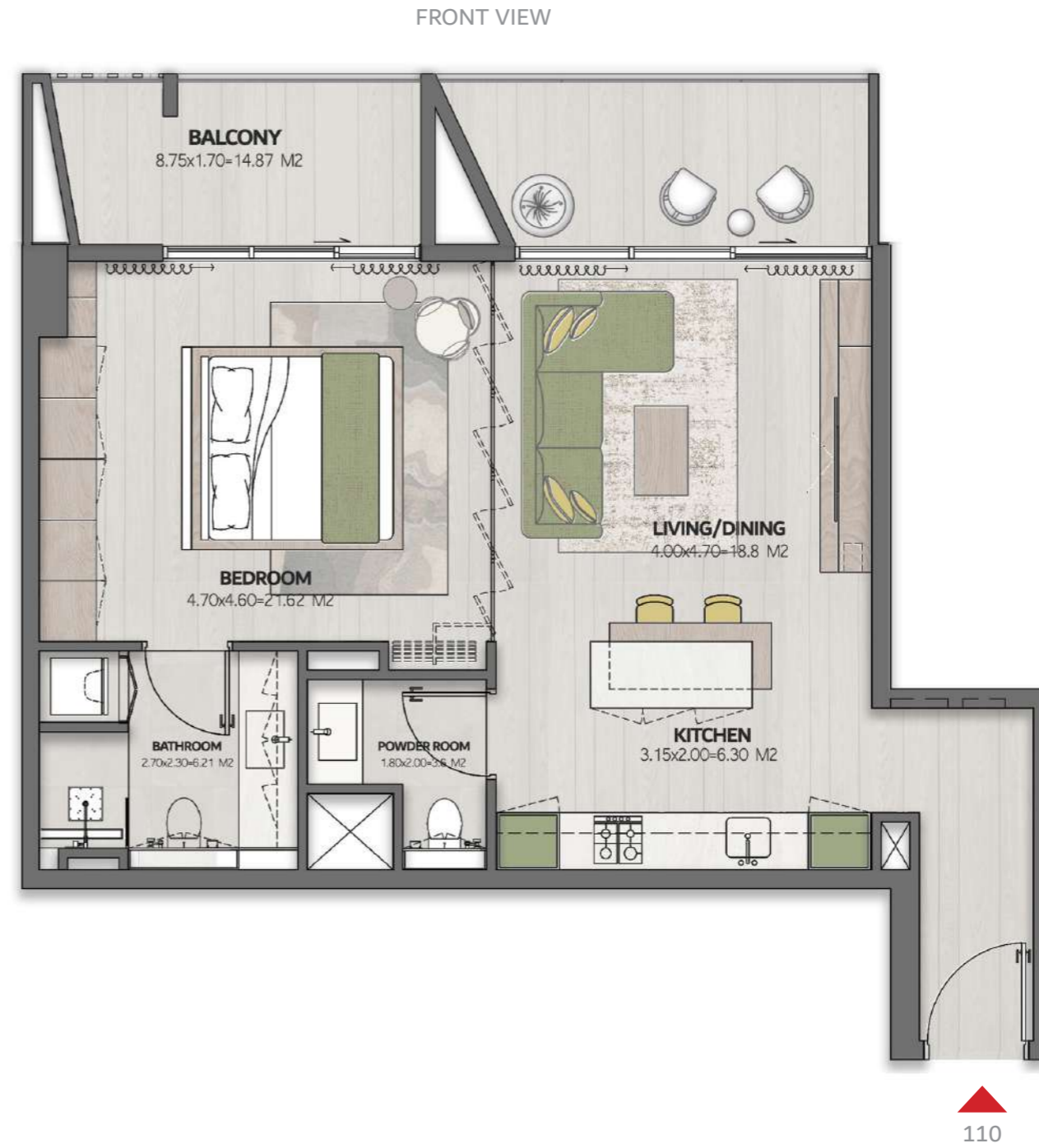
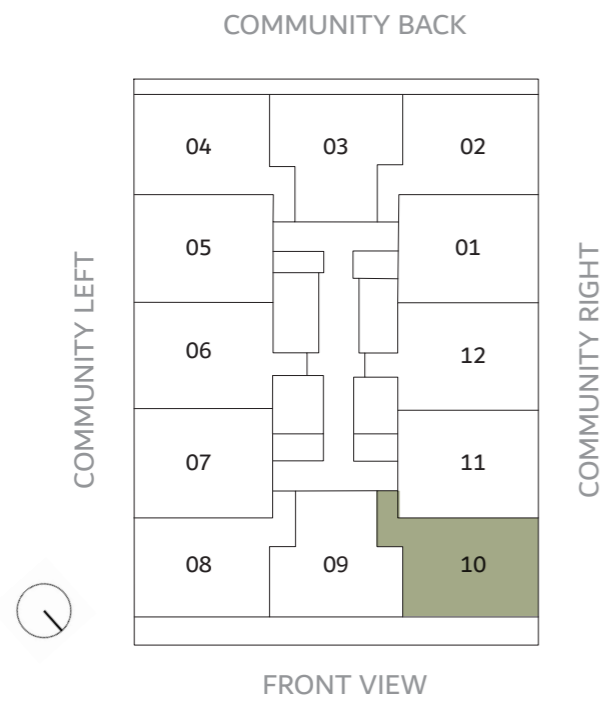


THE CUBE

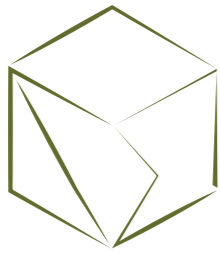
RESIDENCES

1 BEDROOM -TYPE 2

LEVEL 1	UNIT 110
SUITE AREA	689 FT ²
BALCONY	175.3 FT ²
TOTAL AREA	864.34 FT ²



Disclaimer: This document is intended for estimation purposes only. The information contained herein is subject to change and may be modified during the course of construction. The developer reserves the right to make adjustments as necessary without prior notice. Any discrepancies or variations that arise during the construction process will be addressed and resolved in accordance with the project's requirements and best practices.

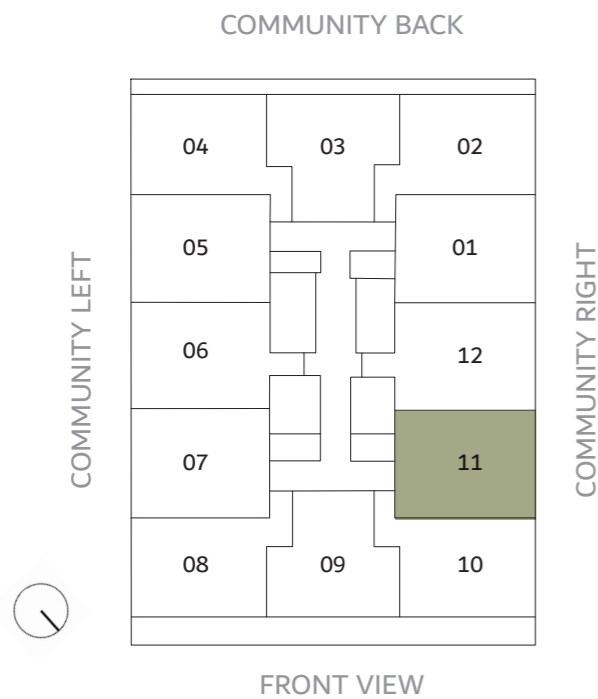


THE CUBE

RESIDENCES

1 BEDROOM -TYPE 1

LEVEL 1	UNIT 111
SUITE AREA	639.91 FT ²
BALCONY	68.24FT ²
TOTAL AREA	708.16FT ²

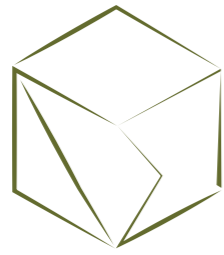


COMMUNITY RIGHT



111

Disclaimer: This document is intended for estimation purposes only. The information contained herein is subject to change and may be modified during the course of construction. The developer reserves the right to make adjustments as necessary without prior notice. Any discrepancies or variations that arise during the construction process will be addressed and resolved in accordance with the project's requirements and best practices.

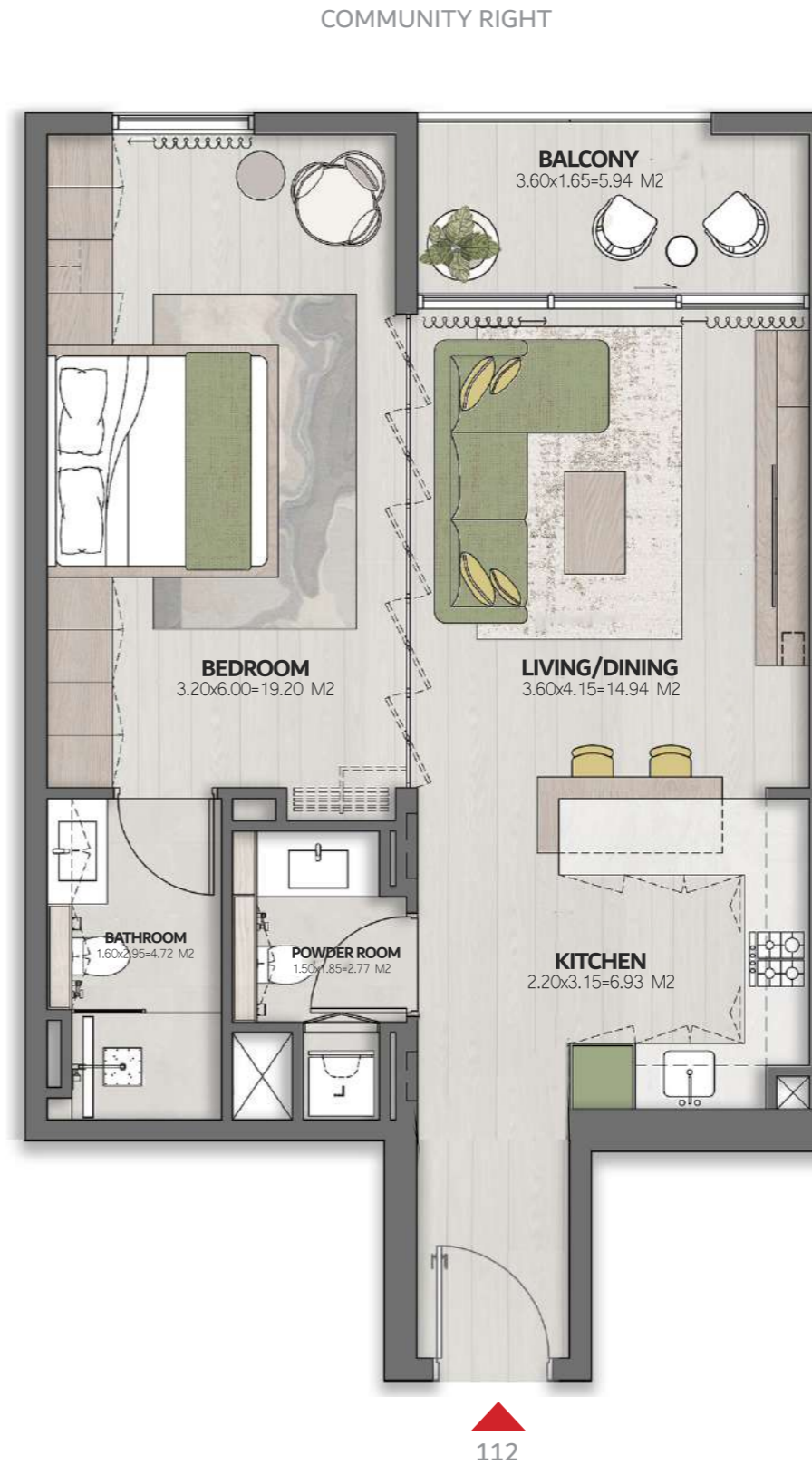
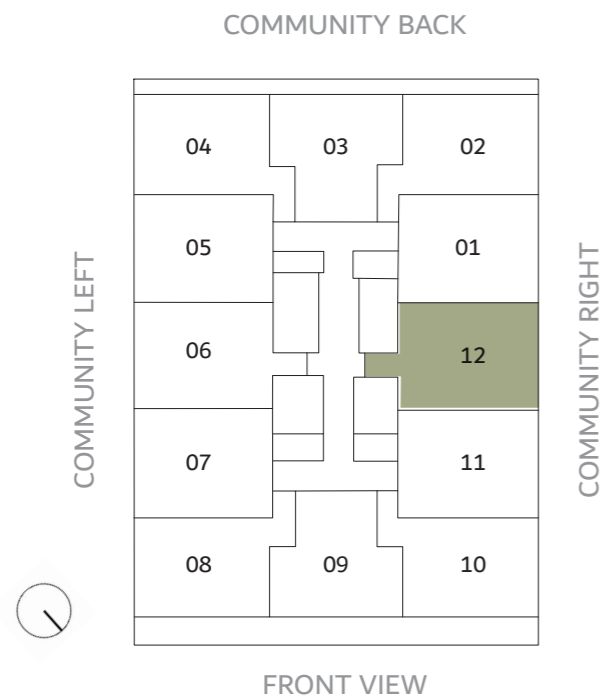


THE CUBE

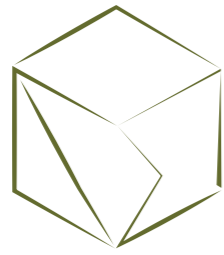
RESIDENCES

1 BEDROOM -TYPE 1

LEVEL 1	UNIT 112
SUITE AREA	681.57 FT ²
BALCONY	68.14FT ²
TOTAL AREA	749.71FT ²



Disclaimer: This document is intended for estimation purposes only. The information contained herein is subject to change and may be modified during the course of construction. The developer reserves the right to make adjustments as necessary without prior notice. Any discrepancies or variations that arise during the construction process will be addressed and resolved in accordance with the project's requirements and best practices.

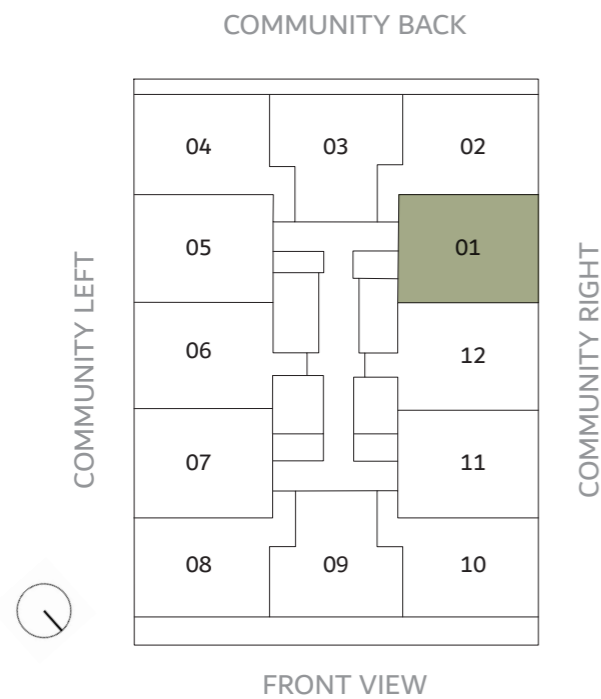


THE CUBE

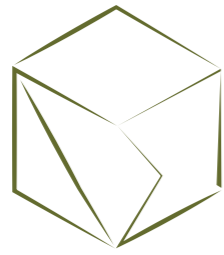
RESIDENCES

1 BEDROOM -TYPE 1

LEVEL 2	UNIT 201
SUITE AREA	639.91 FT ²
BALCONY	68.24FT ²
TOTAL AREA	708.16FT ²



Disclaimer: This document is intended for estimation purposes only. The information contained herein is subject to change and may be modified during the course of construction. The developer reserves the right to make adjustments as necessary without prior notice. Any discrepancies or variations that arise during the construction process will be addressed and resolved in accordance with the project's requirements and best practices.



THE CUBE

RESIDENCES

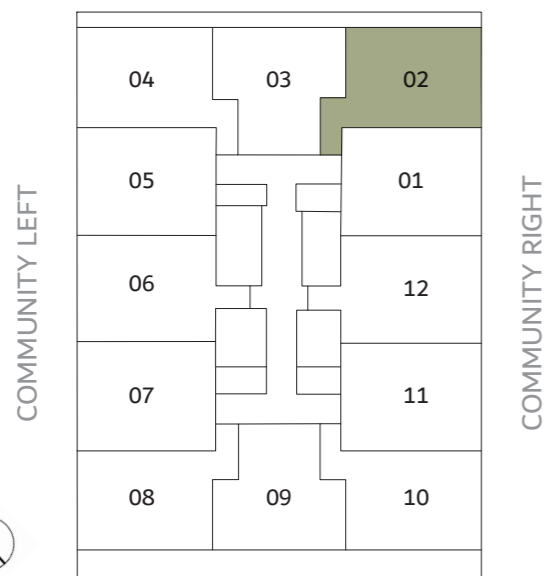
1 BEDROOM -TYPE 2

LEVEL 2	UNIT 202
SUITE AREA	689 FT ²
BALCONY	96.01 FT ²
TOTAL AREA	785.01 FT ²

COMMUNITY BACK

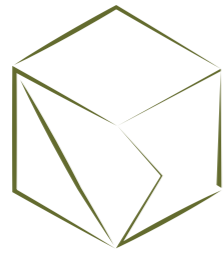


COMMUNITY BACK



FRONT VIEW

Disclaimer: This document is intended for estimation purposes only. The information contained herein is subject to change and may be modified during the course of construction. The developer reserves the right to make adjustments as necessary without prior notice. Any discrepancies or variations that arise during the construction process will be addressed and resolved in accordance with the project's requirements and best practices.

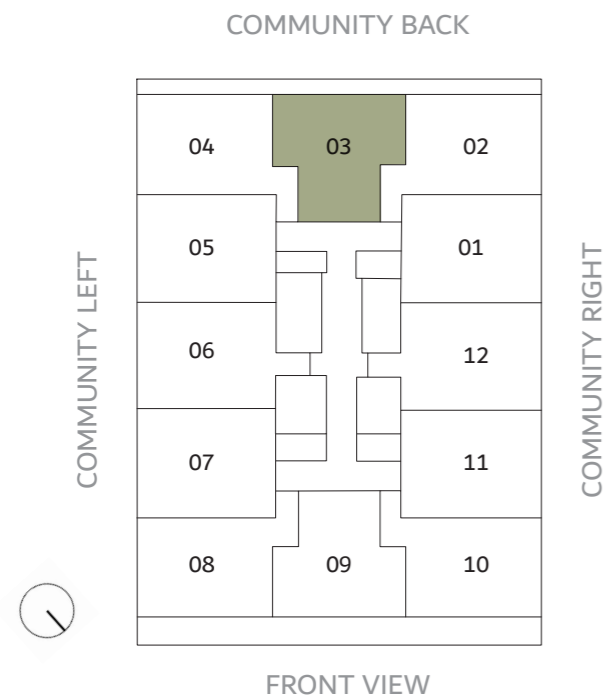


THE CUBE

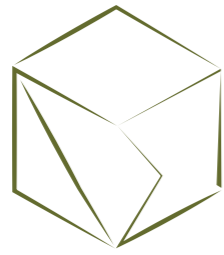
RESIDENCES

1 BEDROOM -TYPE 3

LEVEL 2	UNIT 203
SUITE AREA	653.37FT ²
BALCONY	98.17 FT ²
TOTAL AREA	751.54 FT ²



Disclaimer: This document is intended for estimation purposes only. The information contained herein is subject to change and may be modified during the course of construction. The developer reserves the right to make adjustments as necessary without prior notice. Any discrepancies or variations that arise during the construction process will be addressed and resolved in accordance with the project's requirements and best practices.



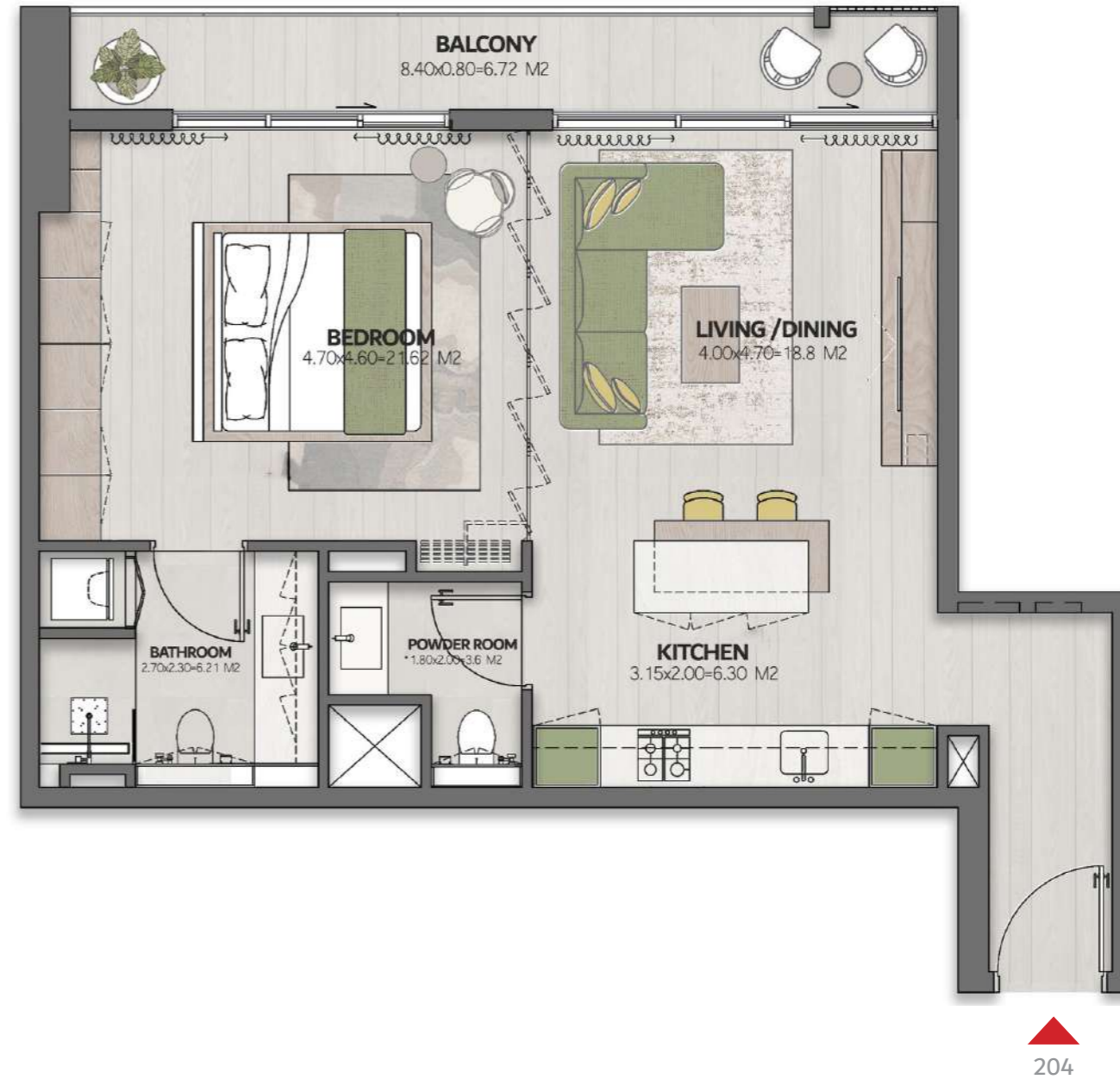
THE CUBE

RESIDENCES

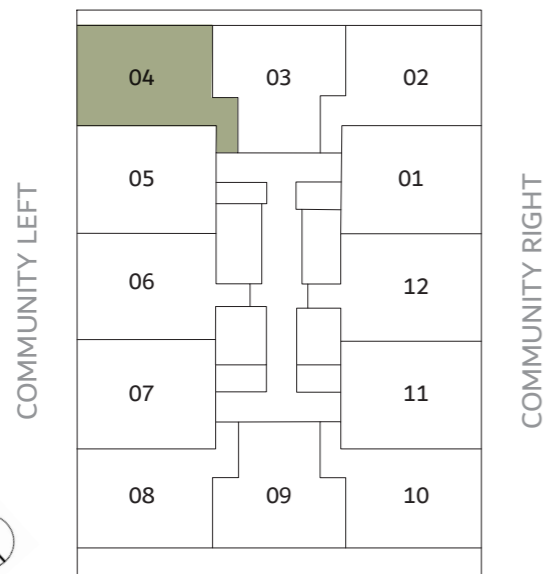
1 BEDROOM -TYPE 2

LEVEL 2	UNIT 204
SUITE AREA	689FT ²
BALCONY	96.01 FT ²
TOTAL AREA	785.01 FT ²

COMMUNITY BACK

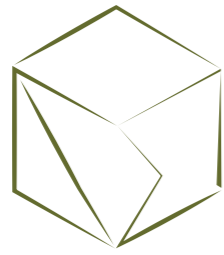


COMMUNITY BACK



FRONT VIEW

Disclaimer: This document is intended for estimation purposes only. The information contained herein is subject to change and may be modified during the course of construction. The developer reserves the right to make adjustments as necessary without prior notice. Any discrepancies or variations that arise during the construction process will be addressed and resolved in accordance with the project's requirements and best practices.



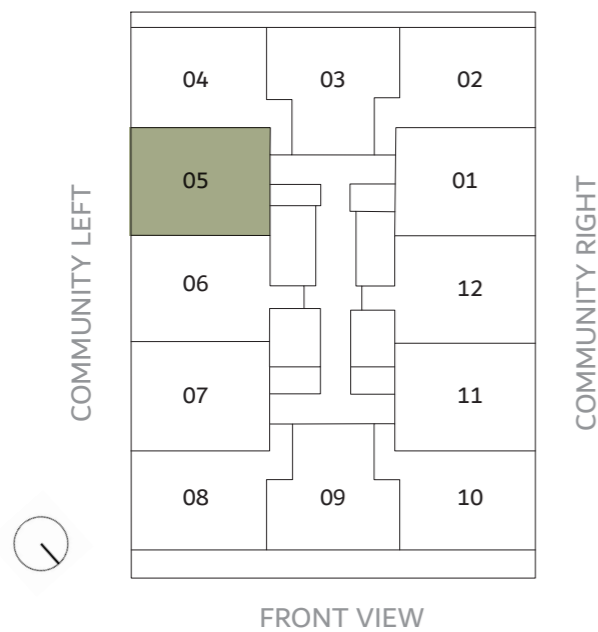
THE CUBE

RESIDENCES

1 BEDROOM -TYPE 1

LEVEL 2	UNIT 205
SUITE AREA	639.91 FT ²
BALCONY	68.24FT ²
TOTAL AREA	708.16FT ²

COMMUNITY BACK

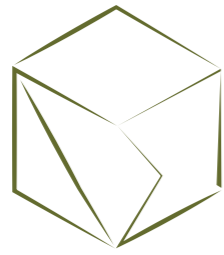


COMMUNITY LEFT



205

Disclaimer: This document is intended for estimation purposes only. The information contained herein is subject to change and may be modified during the course of construction. The developer reserves the right to make adjustments as necessary without prior notice. Any discrepancies or variations that arise during the construction process will be addressed and resolved in accordance with the project's requirements and best practices.

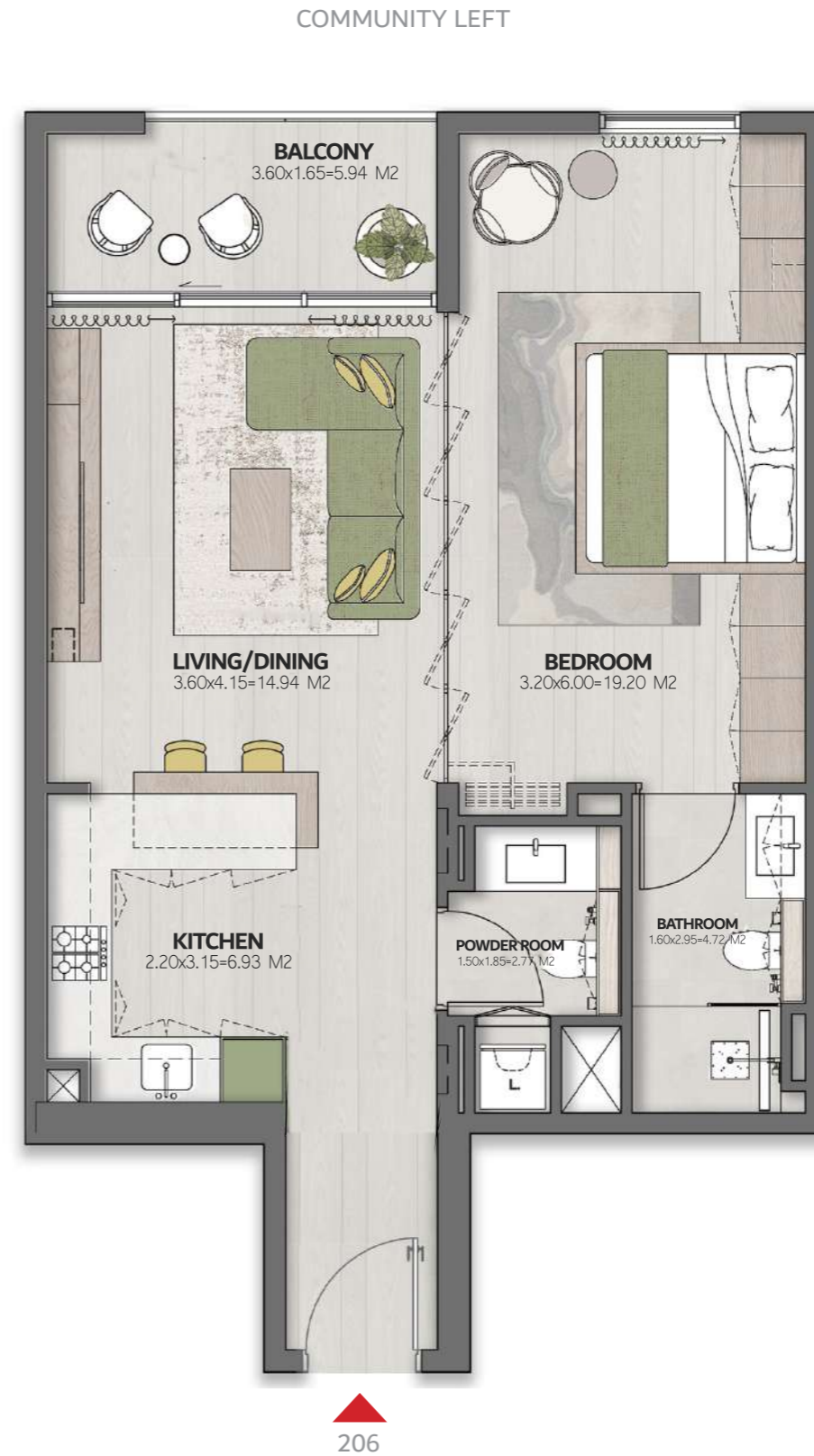
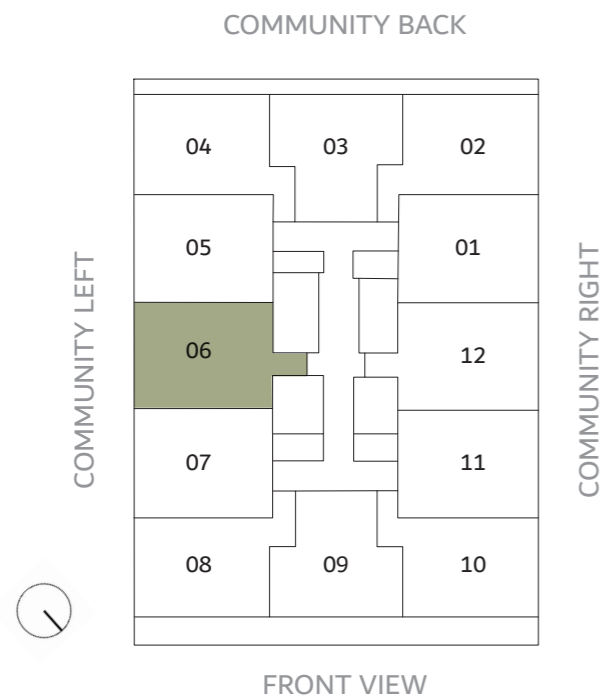


THE CUBE

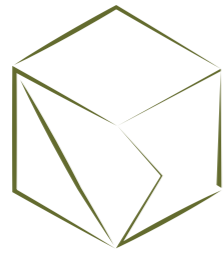
RESIDENCES

1 BEDROOM -TYPE 1

LEVEL 2	UNIT 206
SUITE AREA	681.57 FT ²
BALCONY	68.14FT ²
TOTAL AREA	749.71FT ²



Disclaimer: This document is intended for estimation purposes only. The information contained herein is subject to change and may be modified during the course of construction. The developer reserves the right to make adjustments as necessary without prior notice. Any discrepancies or variations that arise during the construction process will be addressed and resolved in accordance with the project's requirements and best practices.

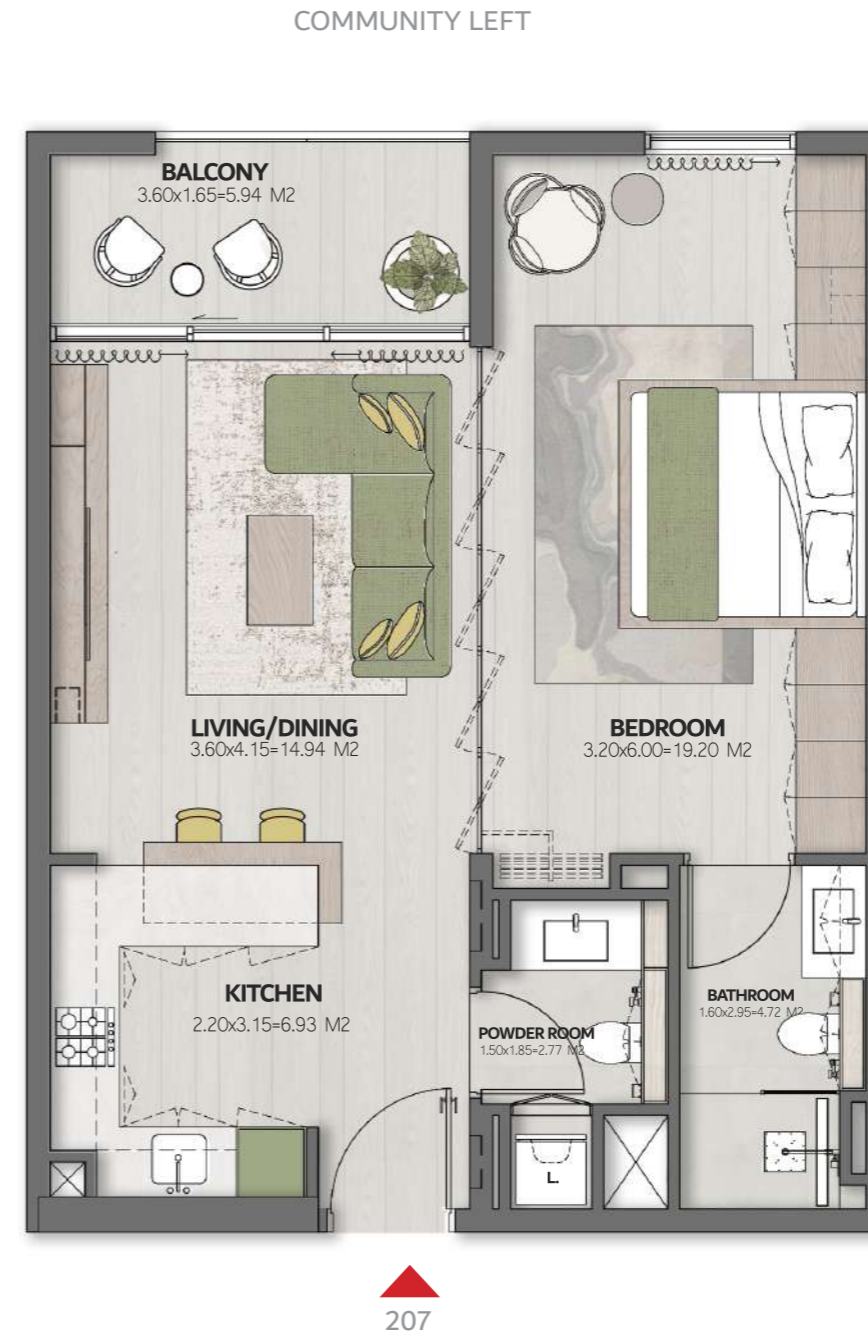
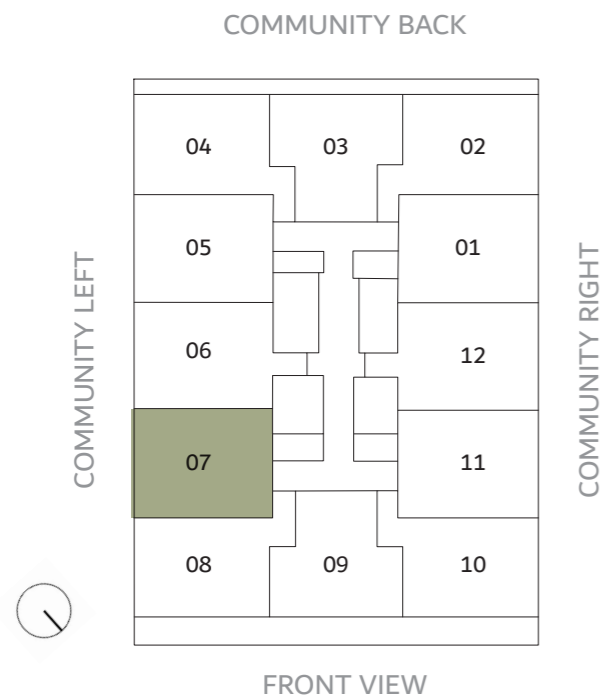


THE CUBE

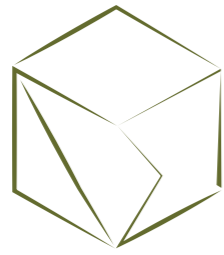
RESIDENCES

1 BEDROOM -TYPE 1

LEVEL 2	UNIT 207
SUITE AREA	639.91 FT ²
BALCONY	68.24FT ²
TOTAL AREA	708.16FT ²



Disclaimer: This document is intended for estimation purposes only. The information contained herein is subject to change and may be modified during the course of construction. The developer reserves the right to make adjustments as necessary without prior notice. Any discrepancies or variations that arise during the construction process will be addressed and resolved in accordance with the project's requirements and best practices.

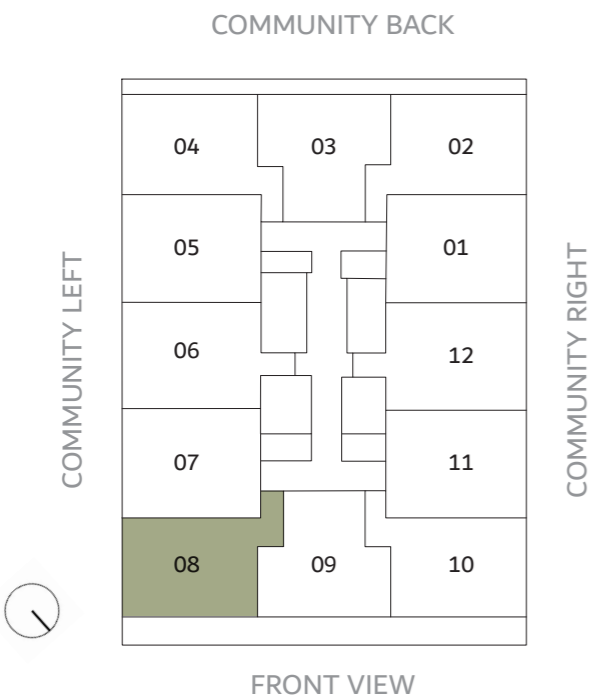


THE CUBE

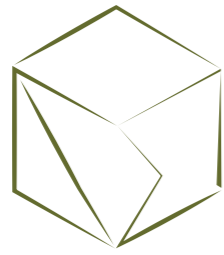
RESIDENCES

1 BEDROOM -TYPE 2

LEVEL 2	UNIT 208
SUITE AREA	689 FT ²
BALCONY	175.3 FT ²
TOTAL AREA	864.34 FT ²



Disclaimer: This document is intended for estimation purposes only. The information contained herein is subject to change and may be modified during the course of construction. The developer reserves the right to make adjustments as necessary without prior notice. Any discrepancies or variations that arise during the construction process will be addressed and resolved in accordance with the project's requirements and best practices.

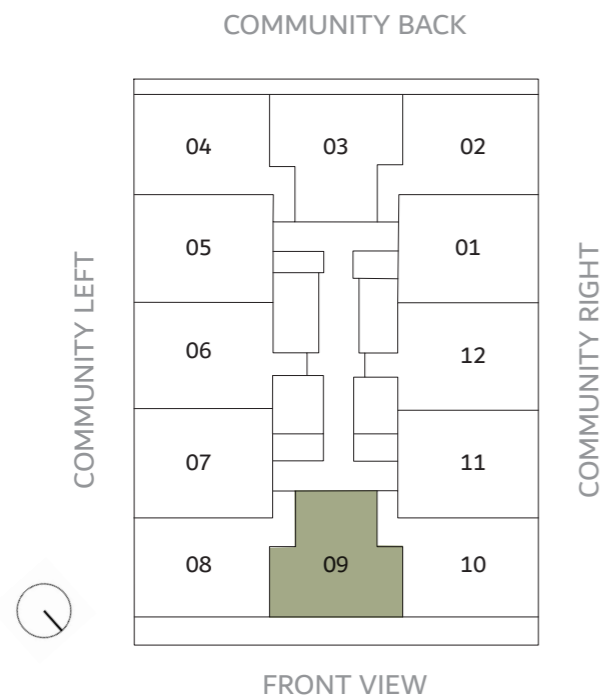


THE CUBE

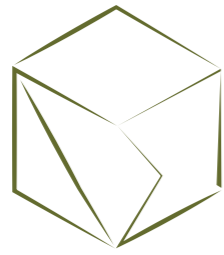
RESIDENCES

1 BEDROOM -TYPE 3

LEVEL 2	UNIT 209
SUITE AREA	653.37FT ²
BALCONY	177.80 FT ²
TOTAL AREA	831.19FT ²



Disclaimer: This document is intended for estimation purposes only. The information contained herein is subject to change and may be modified during the course of construction. The developer reserves the right to make adjustments as necessary without prior notice. Any discrepancies or variations that arise during the construction process will be addressed and resolved in accordance with the project's requirements and best practices.

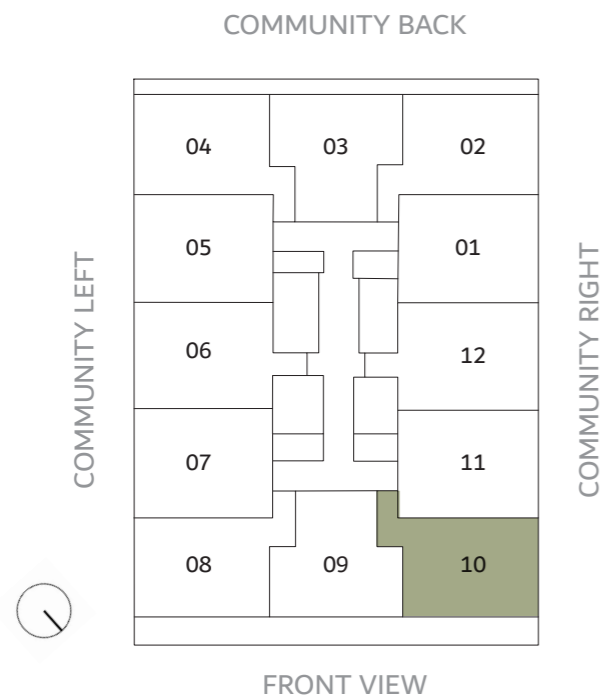


THE CUBE

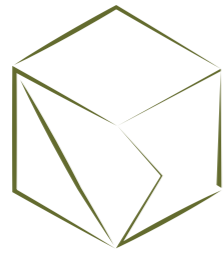
RESIDENCES

1 BEDROOM -TYPE 2

LEVEL 2	UNIT 210
SUITE AREA	689 FT ²
BALCONY	175.3 FT ²
TOTAL AREA	864.34 FT ²



Disclaimer: This document is intended for estimation purposes only. The information contained herein is subject to change and may be modified during the course of construction. The developer reserves the right to make adjustments as necessary without prior notice. Any discrepancies or variations that arise during the construction process will be addressed and resolved in accordance with the project's requirements and best practices.

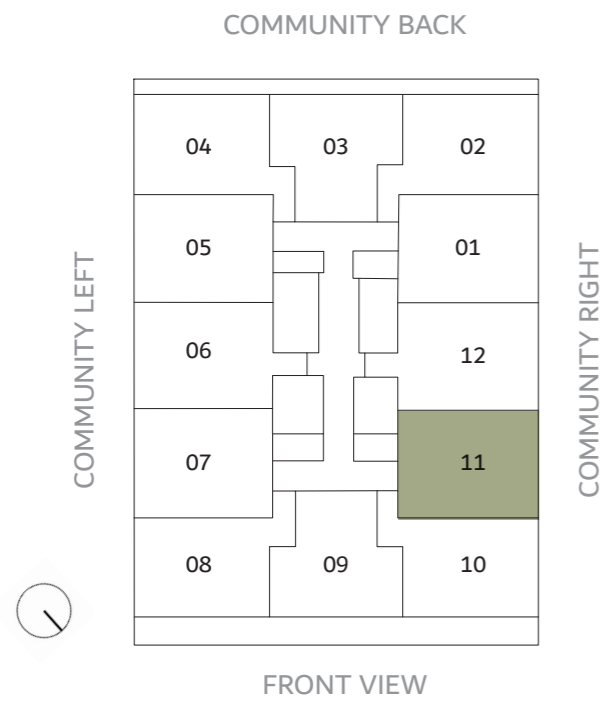


THE CUBE

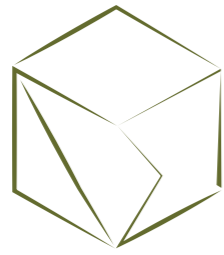
RESIDENCES

1 BEDROOM -TYPE 1

LEVEL 2	UNIT 211
SUITE AREA	639.91 FT ²
BALCONY	68.24FT ²
TOTAL AREA	708.16FT ²



Disclaimer: This document is intended for estimation purposes only. The information contained herein is subject to change and may be modified during the course of construction. The developer reserves the right to make adjustments as necessary without prior notice. Any discrepancies or variations that arise during the construction process will be addressed and resolved in accordance with the project's requirements and best practices.

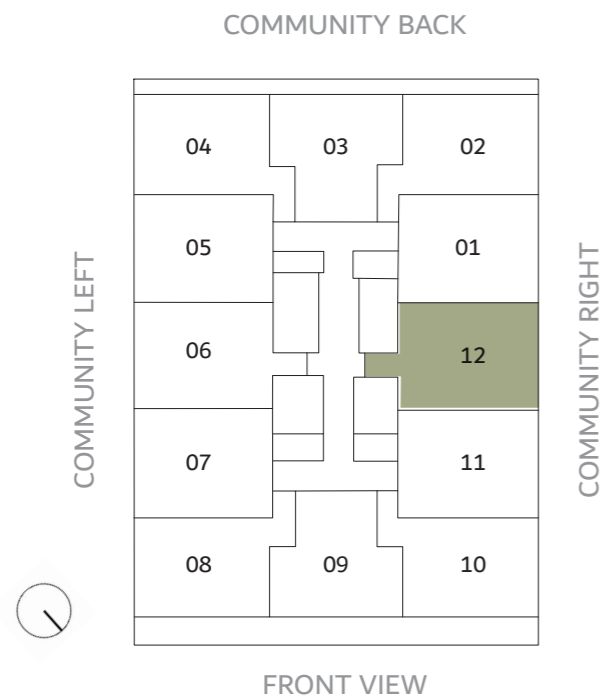


THE CUBE

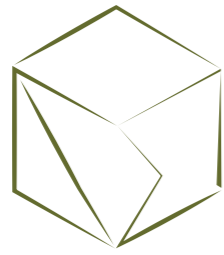
RESIDENCES

1 BEDROOM -TYPE 1

LEVEL 2	UNIT 212
SUITE AREA	681.57 FT ²
BALCONY	68.14FT ²
TOTAL AREA	749.71FT ²



Disclaimer: This document is intended for estimation purposes only. The information contained herein is subject to change and may be modified during the course of construction. The developer reserves the right to make adjustments as necessary without prior notice. Any discrepancies or variations that arise during the construction process will be addressed and resolved in accordance with the project's requirements and best practices.

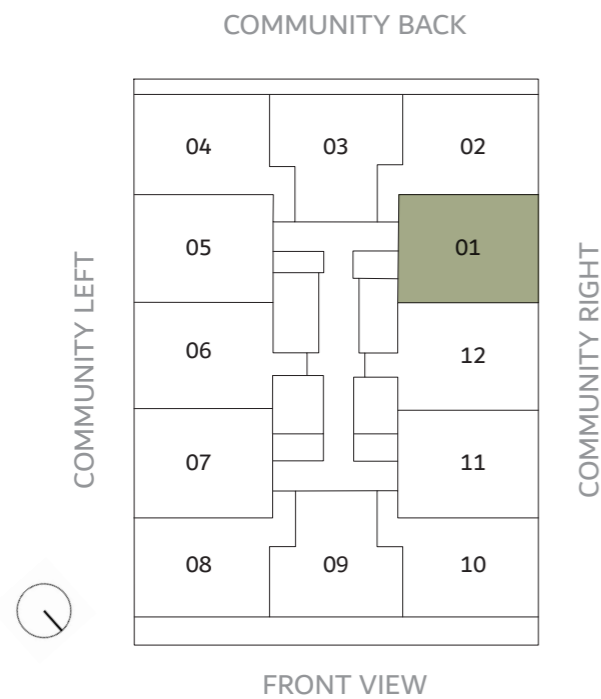


THE CUBE

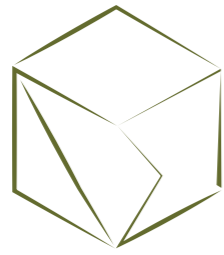
RESIDENCES

1 BEDROOM -TYPE 1

LEVEL 3	UNIT 301
SUITE AREA	639.91 FT ²
BALCONY	68.24FT ²
TOTAL AREA	708.16FT ²



Disclaimer: This document is intended for estimation purposes only. The information contained herein is subject to change and may be modified during the course of construction. The developer reserves the right to make adjustments as necessary without prior notice. Any discrepancies or variations that arise during the construction process will be addressed and resolved in accordance with the project's requirements and best practices.



THE CUBE

RESIDENCES

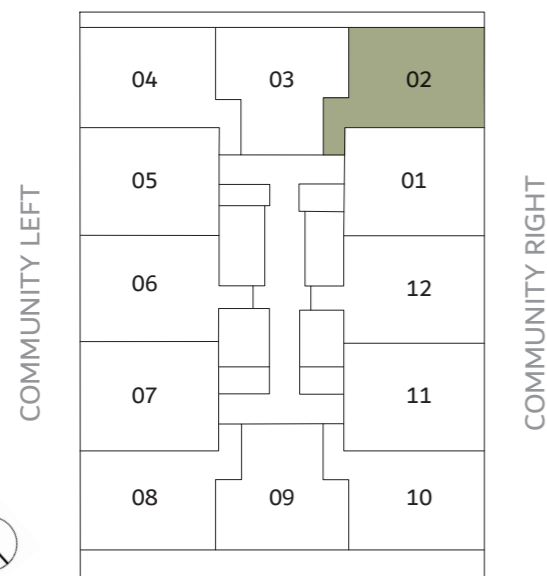
1 BEDROOM -TYPE 2

LEVEL 3	UNIT 302
SUITE AREA	689 FT ²
BALCONY	96.01 FT ²
TOTAL AREA	785.01 FT ²

COMMUNITY BACK

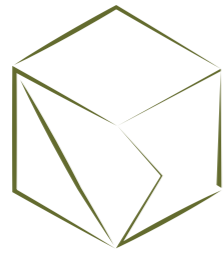


COMMUNITY BACK



FRONT VIEW

Disclaimer: This document is intended for estimation purposes only. The information contained herein is subject to change and may be modified during the course of construction. The developer reserves the right to make adjustments as necessary without prior notice. Any discrepancies or variations that arise during the construction process will be addressed and resolved in accordance with the project's requirements and best practices.

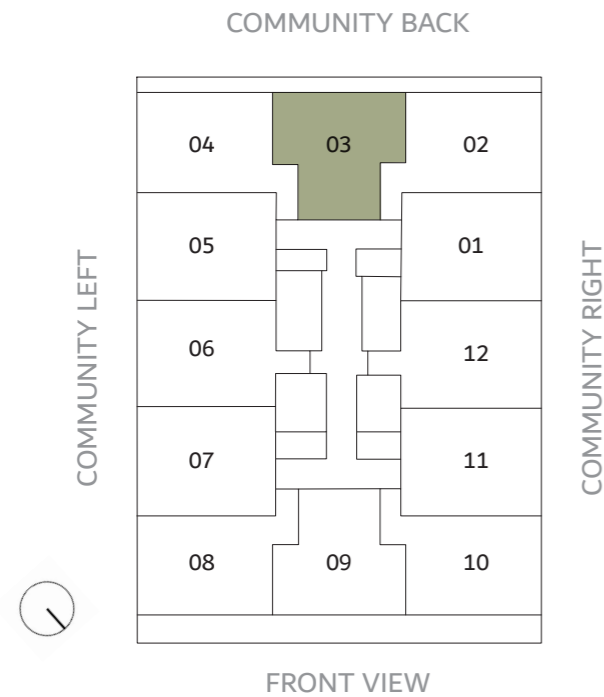


THE CUBE

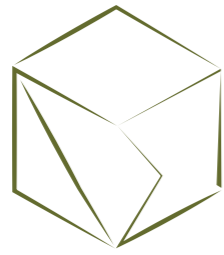
RESIDENCES

1 BEDROOM -TYPE 3

LEVEL 3	UNIT 303
SUITE AREA	653.37FT ²
BALCONY	98.17 FT ²
TOTAL AREA	751.54 FT ²



Disclaimer: This document is intended for estimation purposes only. The information contained herein is subject to change and may be modified during the course of construction. The developer reserves the right to make adjustments as necessary without prior notice. Any discrepancies or variations that arise during the construction process will be addressed and resolved in accordance with the project's requirements and best practices.



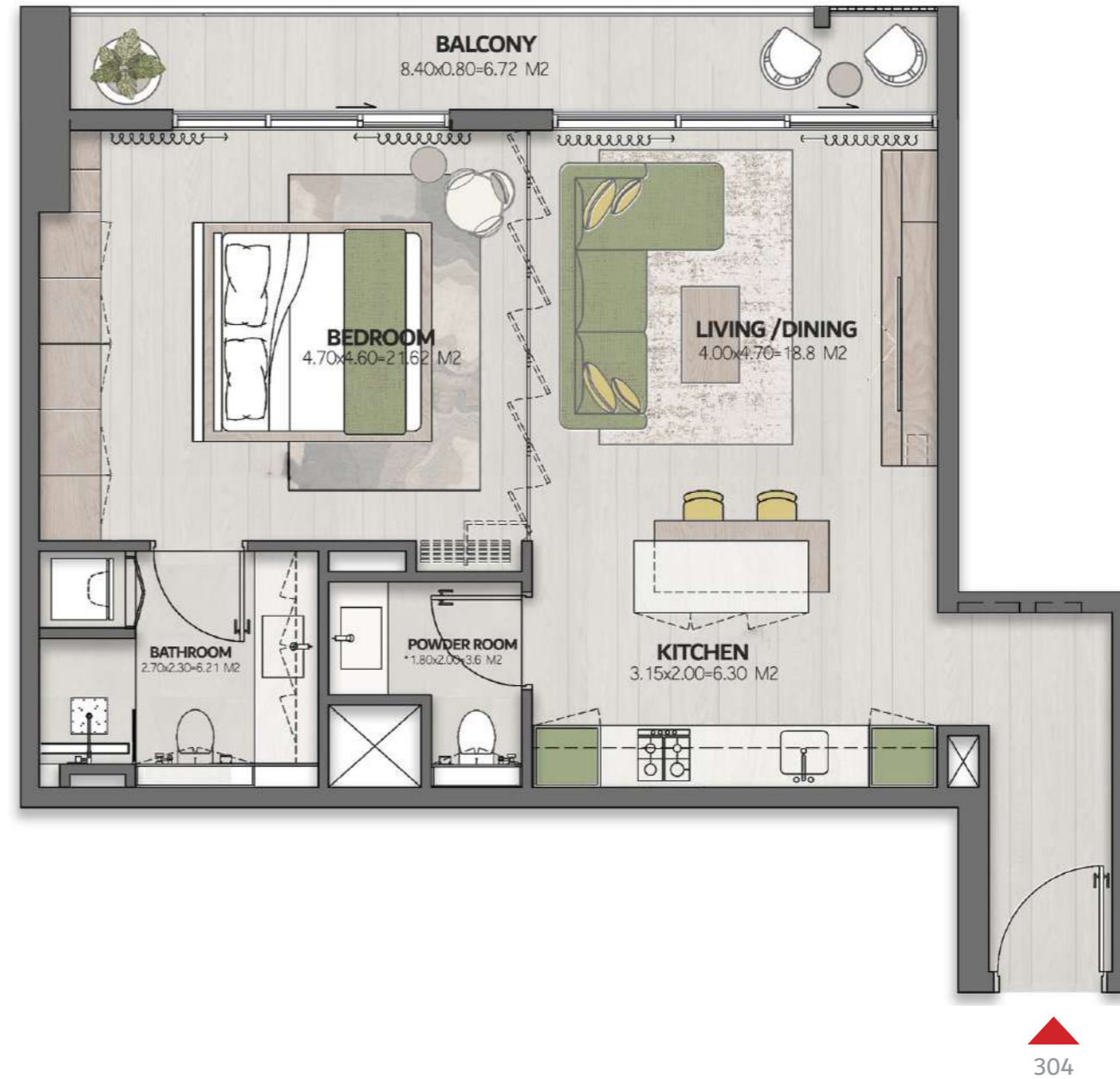
THE CUBE

RESIDENCES

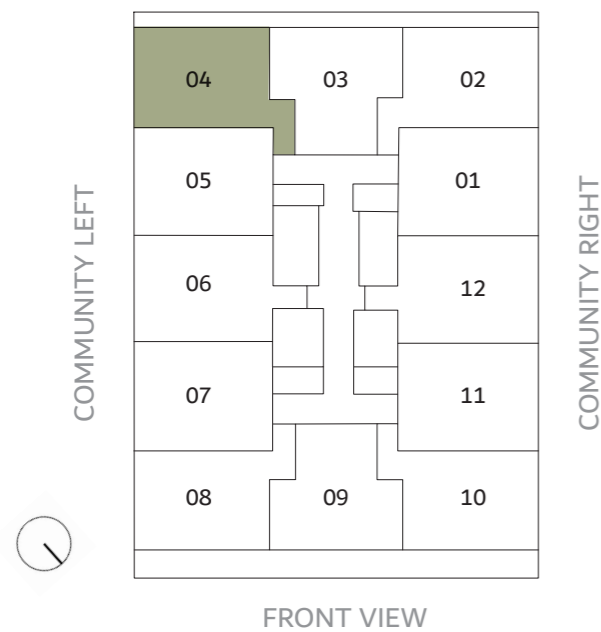
1 BEDROOM -TYPE 2

LEVEL 3	UNIT 304
SUITE AREA	689FT ²
BALCONY	96.01 FT ²
TOTAL AREA	785.01 FT ²

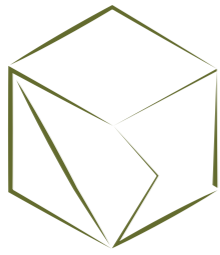
COMMUNITY BACK



COMMUNITY BACK



Disclaimer: This document is intended for estimation purposes only. The information contained herein is subject to change and may be modified during the course of construction. The developer reserves the right to make adjustments as necessary without prior notice. Any discrepancies or variations that arise during the construction process will be addressed and resolved in accordance with the project's requirements and best practices.

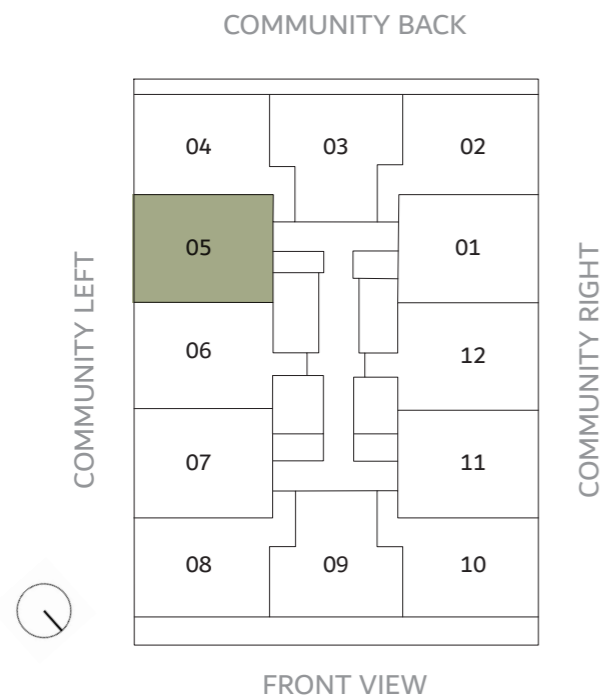


THE CUBE

RESIDENCES

1 BEDROOM -TYPE 1

LEVEL 3	UNIT 305
SUITE AREA	639.91 FT ²
BALCONY	68.24FT ²
TOTAL AREA	708.16FT ²

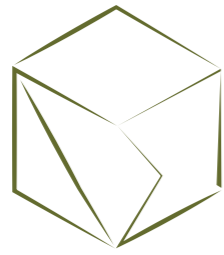


COMMUNITY LEFT



305

Disclaimer: This document is intended for estimation purposes only. The information contained herein is subject to change and may be modified during the course of construction. The developer reserves the right to make adjustments as necessary without prior notice. Any discrepancies or variations that arise during the construction process will be addressed and resolved in accordance with the project's requirements and best practices.

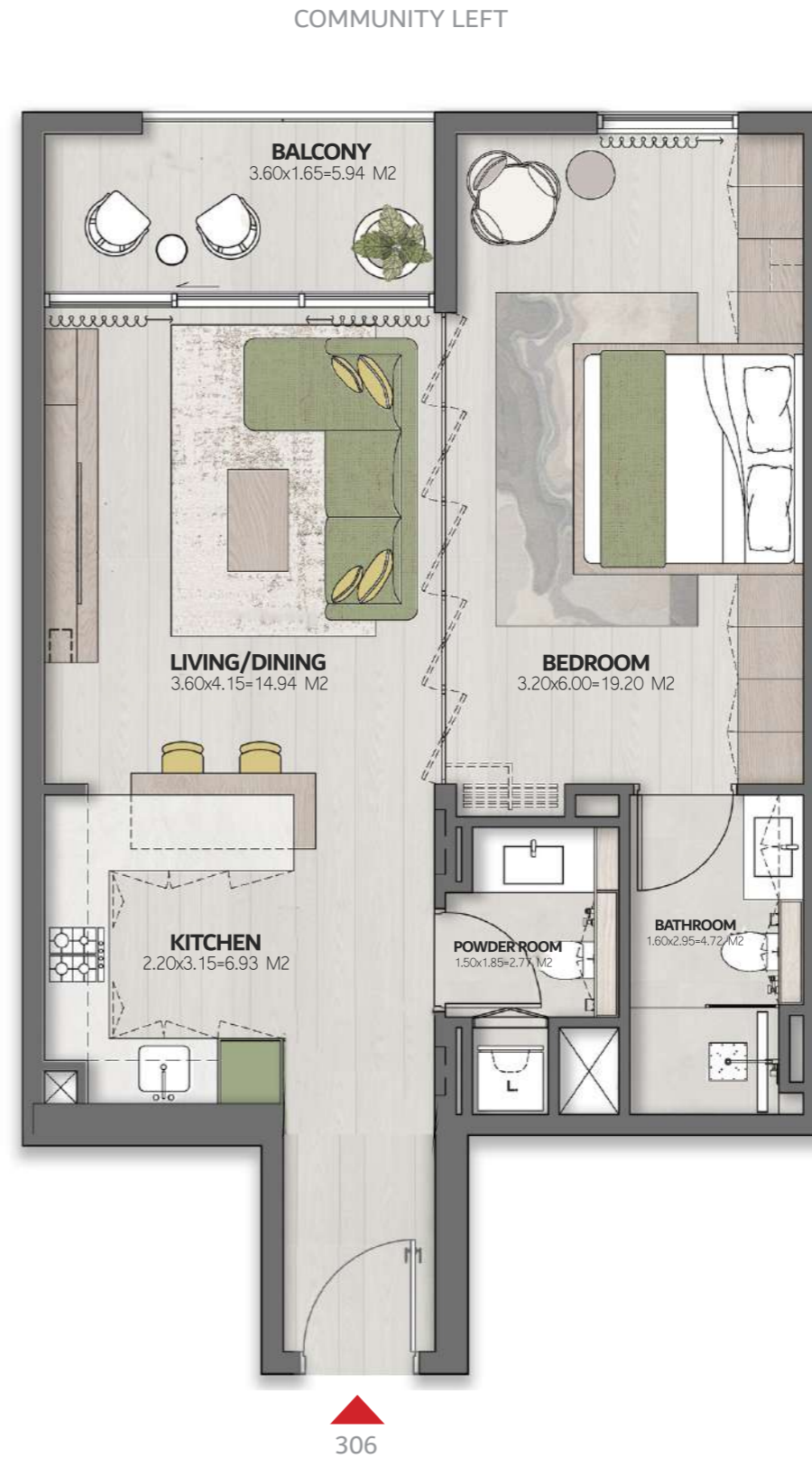
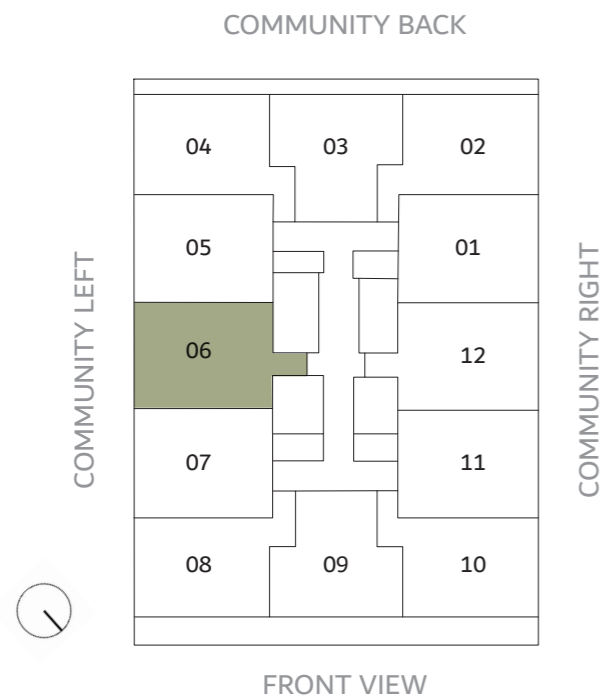


THE CUBE

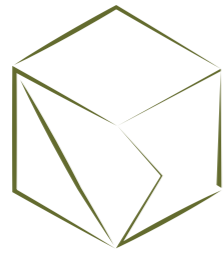
RESIDENCES

1 BEDROOM -TYPE 1

LEVEL 3	UNIT 306
SUITE AREA	681.57 FT ²
BALCONY	68.14FT ²
TOTAL AREA	749.71FT ²



Disclaimer: This document is intended for estimation purposes only. The information contained herein is subject to change and may be modified during the course of construction. The developer reserves the right to make adjustments as necessary without prior notice. Any discrepancies or variations that arise during the construction process will be addressed and resolved in accordance with the project's requirements and best practices.

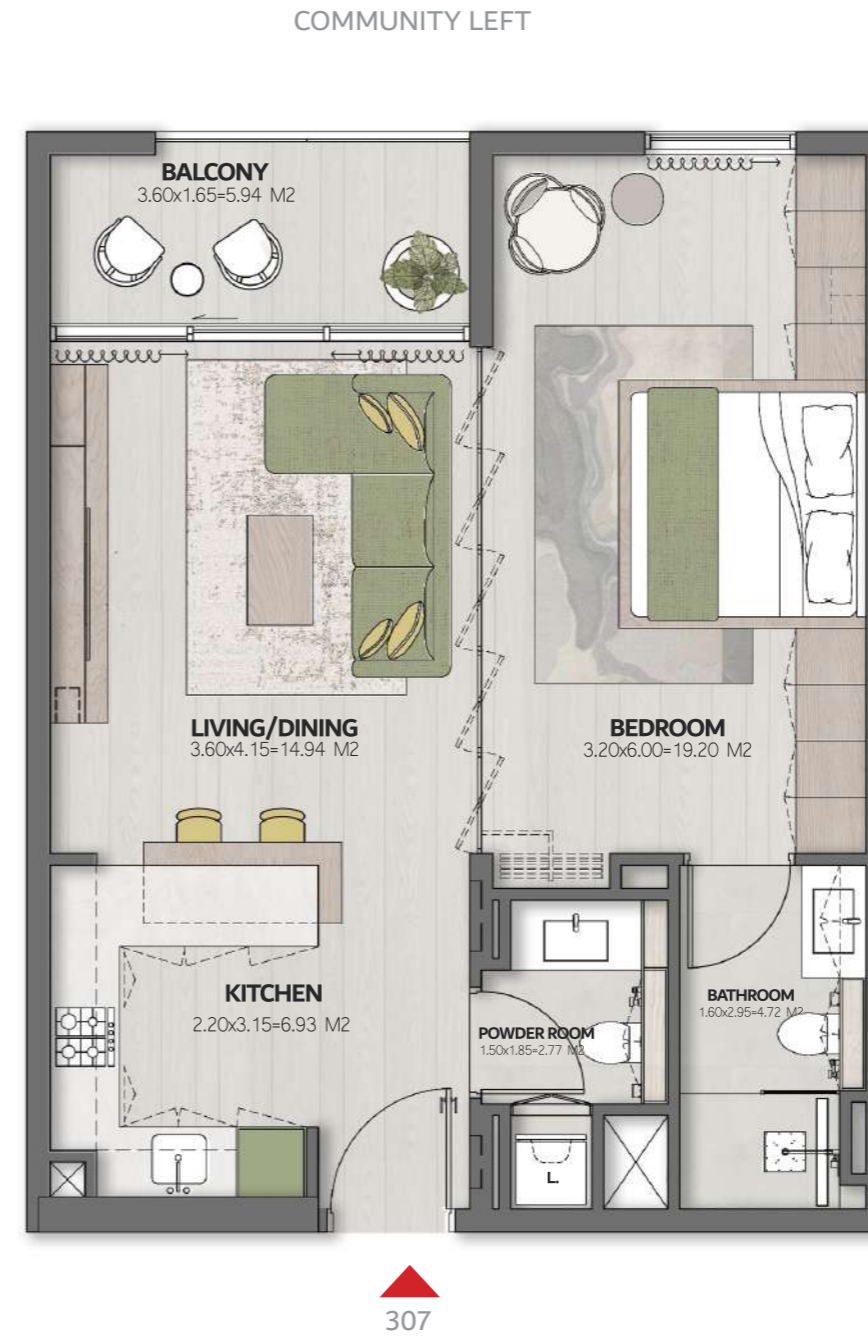
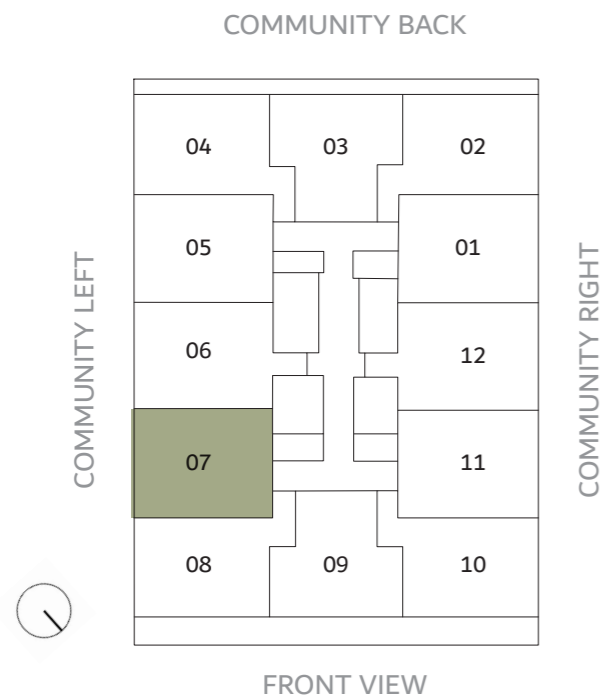


THE CUBE

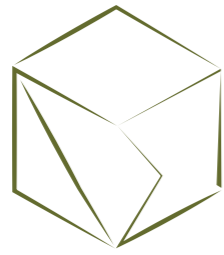
RESIDENCES

1 BEDROOM -TYPE 1

LEVEL 3	UNIT 307
SUITE AREA	639.91 FT ²
BALCONY	68.24FT ²
TOTAL AREA	708.16FT ²



Disclaimer: This document is intended for estimation purposes only. The information contained herein is subject to change and may be modified during the course of construction. The developer reserves the right to make adjustments as necessary without prior notice. Any discrepancies or variations that arise during the construction process will be addressed and resolved in accordance with the project's requirements and best practices.



THE CUBE

RESIDENCES

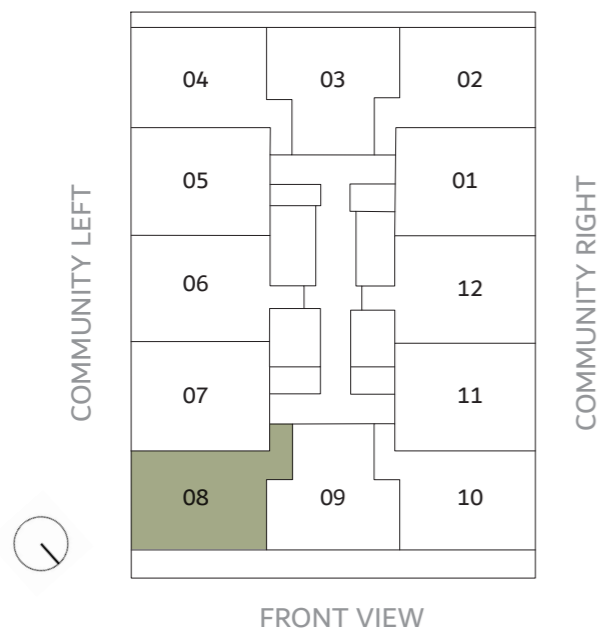
1 BEDROOM -TYPE 2

LEVEL 3	UNIT 308
SUITE AREA	689 FT ²
BALCONY	175.3 FT ²
TOTAL AREA	864.34 FT ²

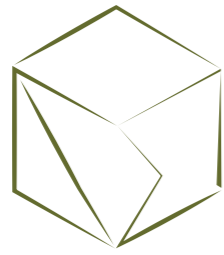
FRONT VIEW



COMMUNITY BACK



Disclaimer: This document is intended for estimation purposes only. The information contained herein is subject to change and may be modified during the course of construction. The developer reserves the right to make adjustments as necessary without prior notice. Any discrepancies or variations that arise during the construction process will be addressed and resolved in accordance with the project's requirements and best practices.

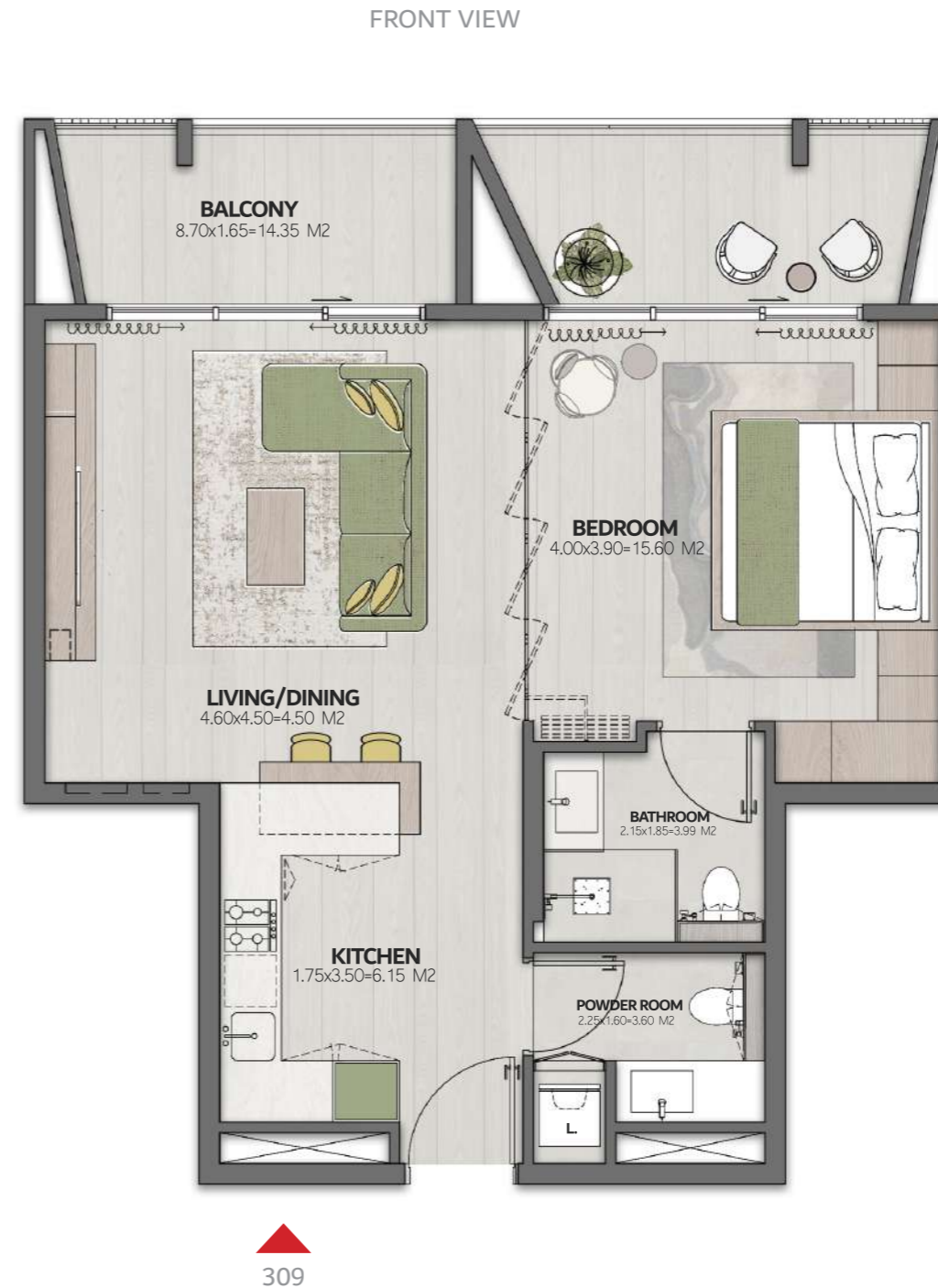
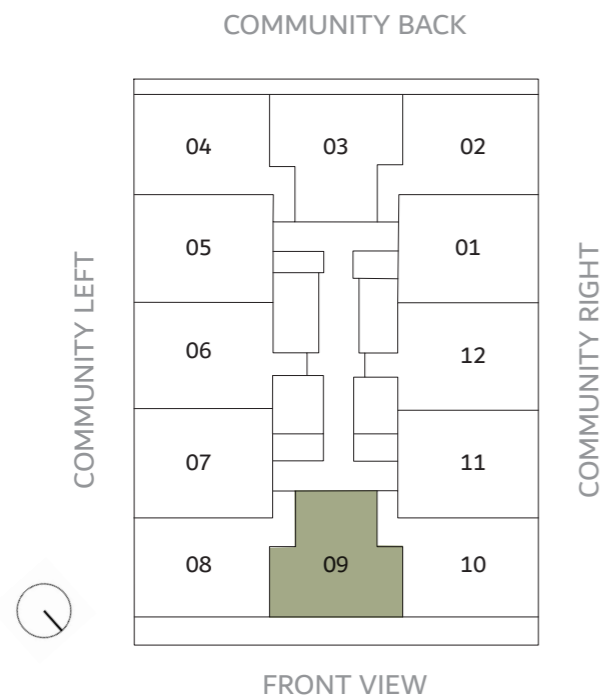


THE CUBE

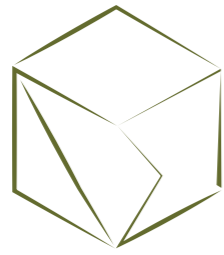
RESIDENCES

1 BEDROOM -TYPE 3

LEVEL 3	UNIT 309
SUITE AREA	653.37FT ²
BALCONY	177.80 FT ²
TOTAL AREA	831.19FT ²



Disclaimer: This document is intended for estimation purposes only. The information contained herein is subject to change and may be modified during the course of construction. The developer reserves the right to make adjustments as necessary without prior notice. Any discrepancies or variations that arise during the construction process will be addressed and resolved in accordance with the project's requirements and best practices.

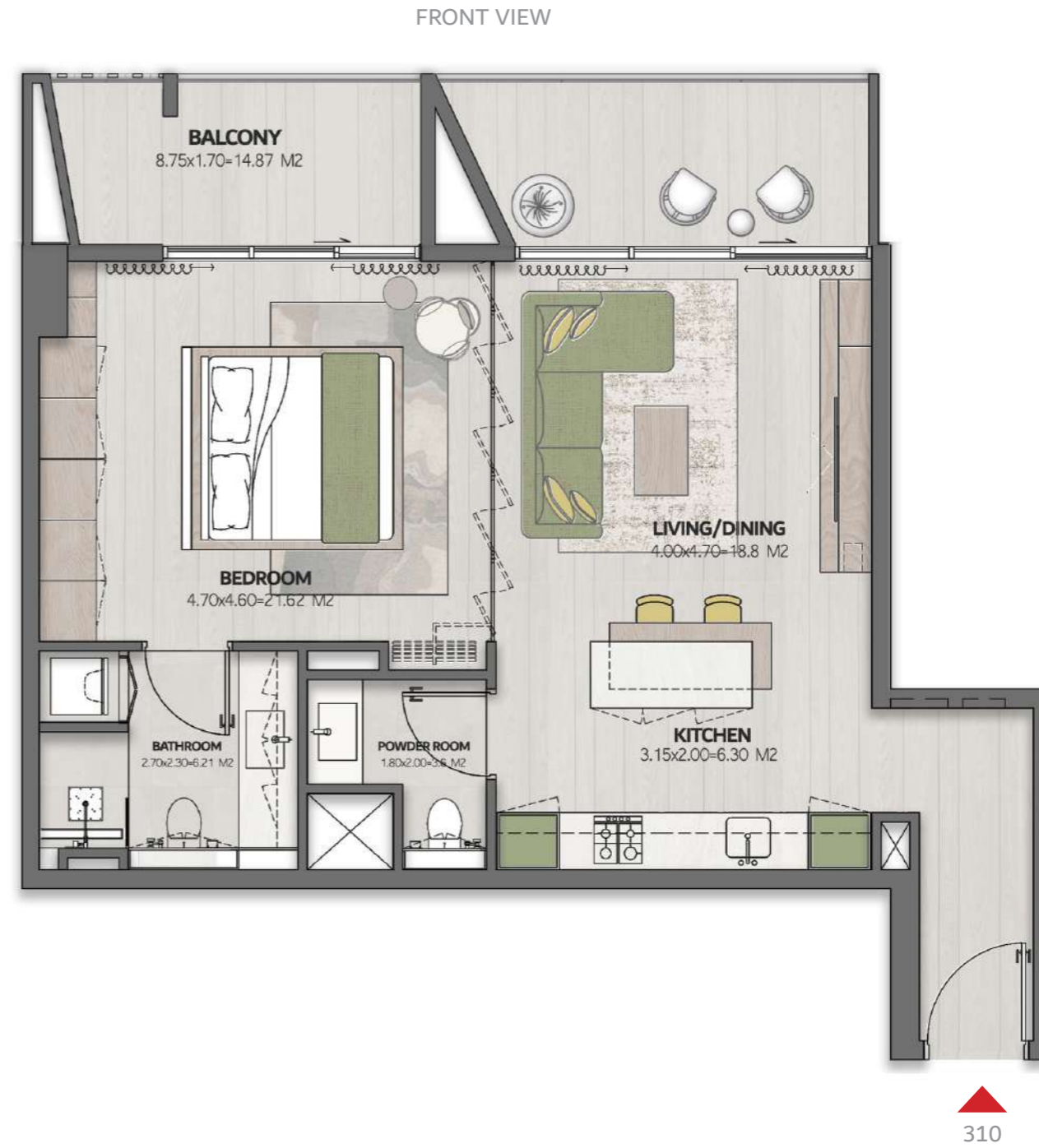
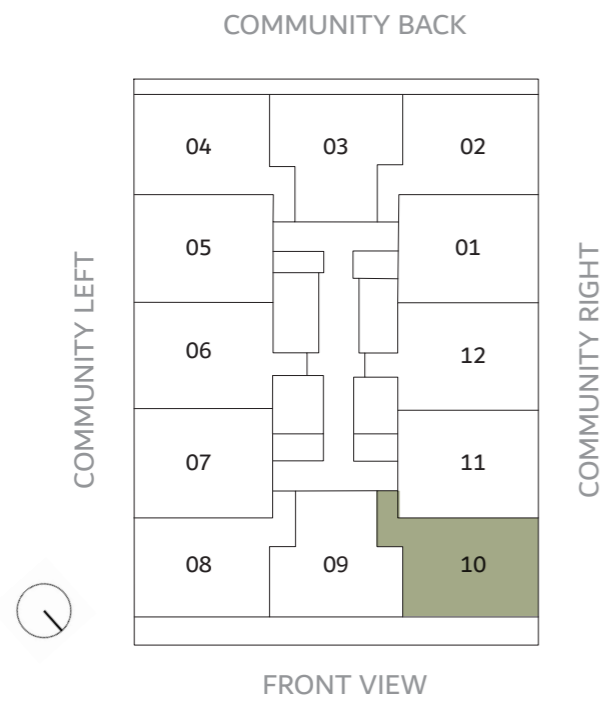


THE CUBE

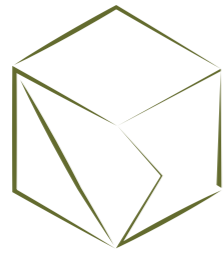
RESIDENCES

1 BEDROOM -TYPE 2

LEVEL 3	UNIT 310
SUITE AREA	689 FT ²
BALCONY	175.3 FT ²
TOTAL AREA	864.34 FT ²



Disclaimer: This document is intended for estimation purposes only. The information contained herein is subject to change and may be modified during the course of construction. The developer reserves the right to make adjustments as necessary without prior notice. Any discrepancies or variations that arise during the construction process will be addressed and resolved in accordance with the project's requirements and best practices.

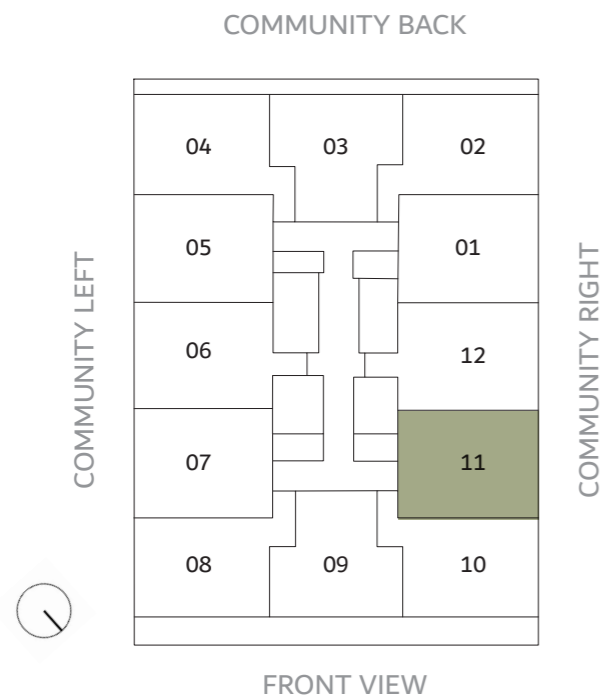


THE CUBE

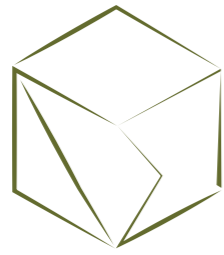
RESIDENCES

1 BEDROOM -TYPE 1

LEVEL 3	UNIT 311
SUITE AREA	639.91 FT ²
BALCONY	68.24FT ²
TOTAL AREA	708.16FT ²



Disclaimer: This document is intended for estimation purposes only. The information contained herein is subject to change and may be modified during the course of construction. The developer reserves the right to make adjustments as necessary without prior notice. Any discrepancies or variations that arise during the construction process will be addressed and resolved in accordance with the project's requirements and best practices.

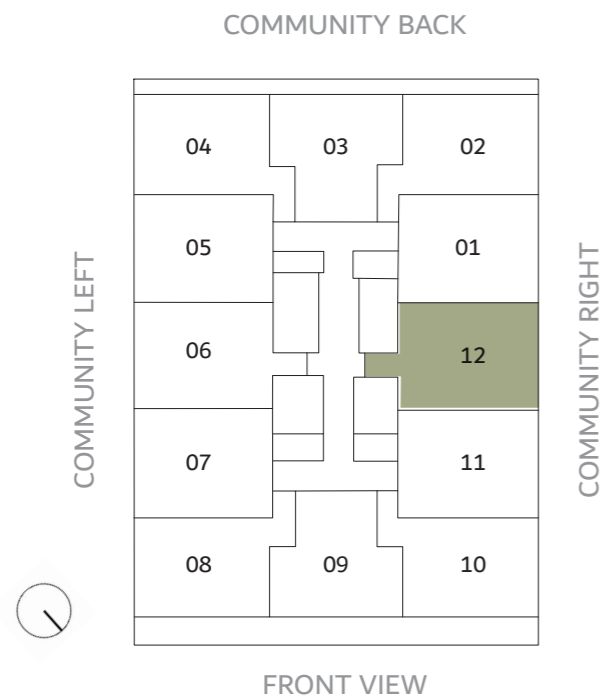


THE CUBE

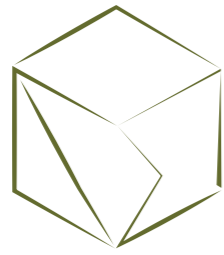
RESIDENCES

1 BEDROOM -TYPE 1

LEVEL 3	UNIT 312
SUITE AREA	681.57 FT ²
BALCONY	68.14FT ²
TOTAL AREA	749.71FT ²



Disclaimer: This document is intended for estimation purposes only. The information contained herein is subject to change and may be modified during the course of construction. The developer reserves the right to make adjustments as necessary without prior notice. Any discrepancies or variations that arise during the construction process will be addressed and resolved in accordance with the project's requirements and best practices.

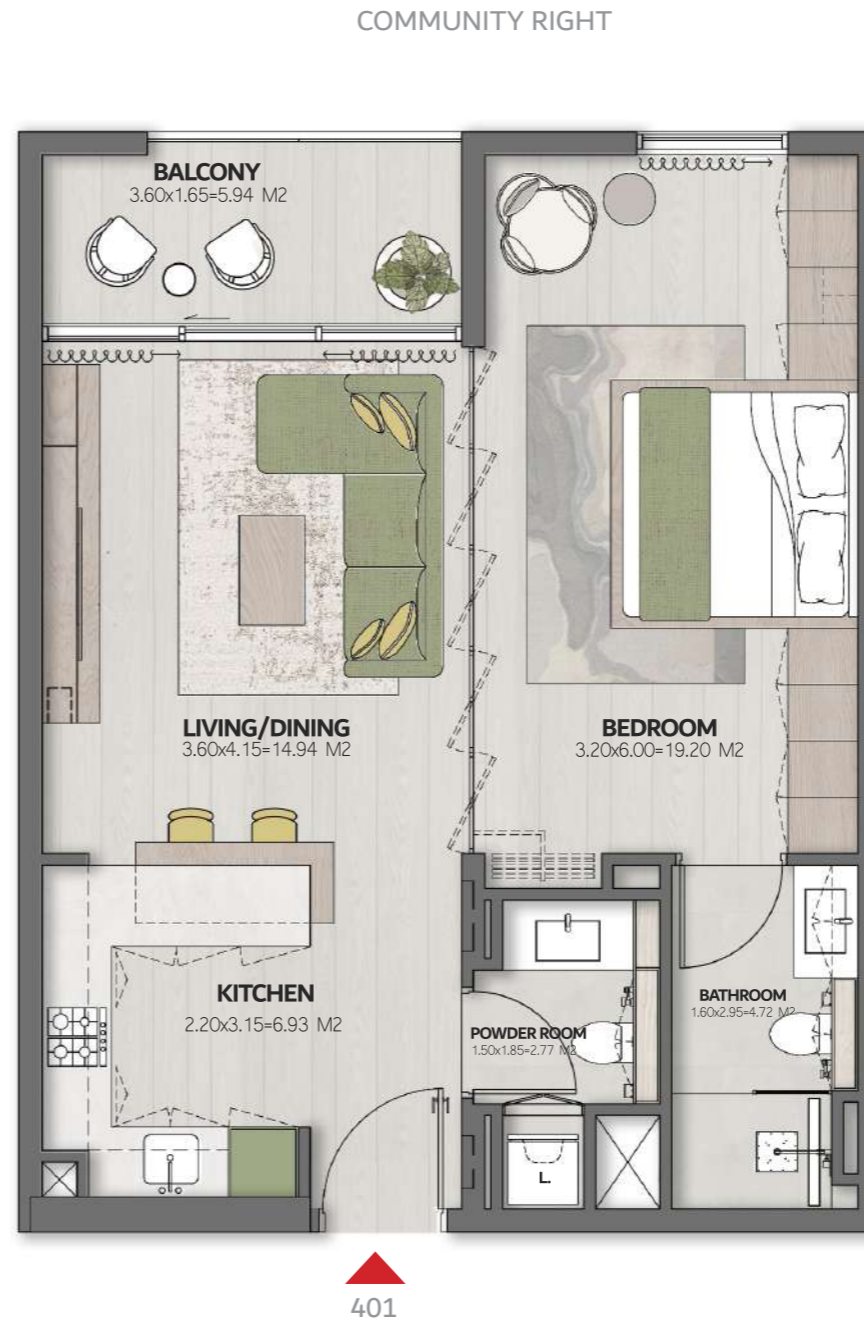
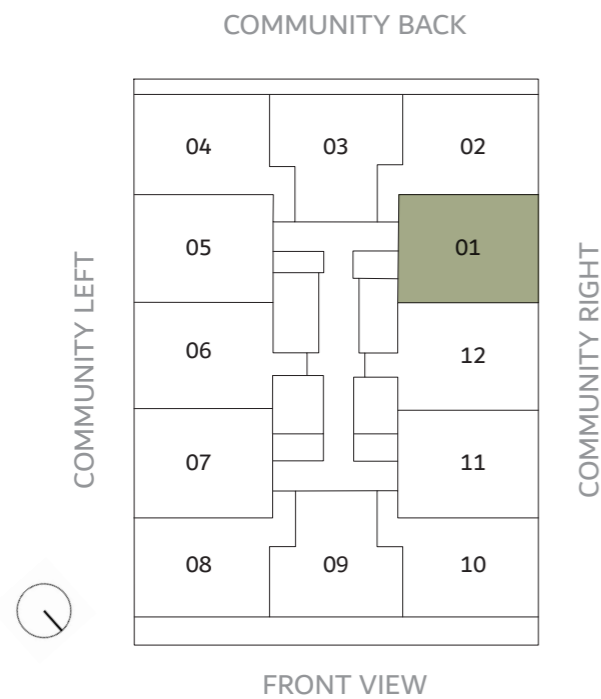


THE CUBE

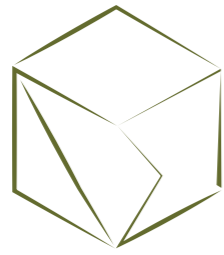
RESIDENCES

1 BEDROOM -TYPE 1

LEVEL 4	UNIT 401
SUITE AREA	639.91 FT ²
BALCONY	68.24FT ²
TOTAL AREA	708.16FT ²



Disclaimer: This document is intended for estimation purposes only. The information contained herein is subject to change and may be modified during the course of construction. The developer reserves the right to make adjustments as necessary without prior notice. Any discrepancies or variations that arise during the construction process will be addressed and resolved in accordance with the project's requirements and best practices.



THE CUBE

RESIDENCES

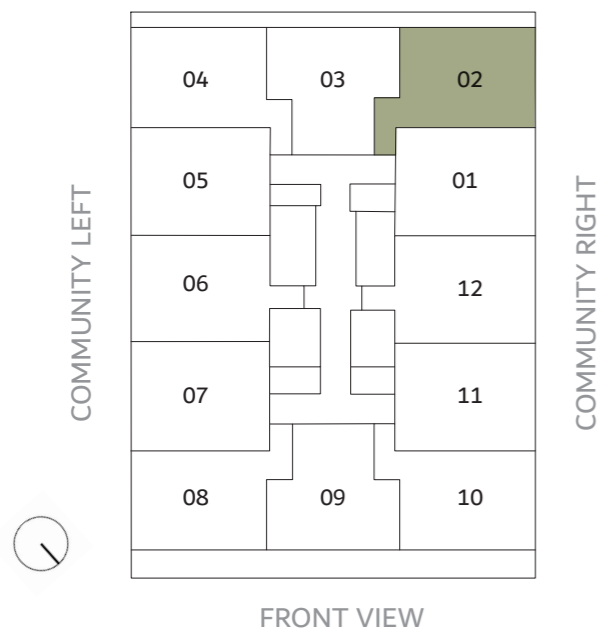
1 BEDROOM -TYPE 2

LEVEL 4	UNIT 402
SUITE AREA	689 FT ²
BALCONY	96.01 FT ²
TOTAL AREA	785.01 FT ²

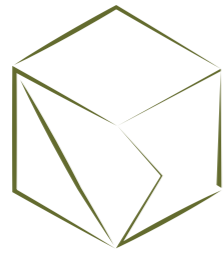
COMMUNITY BACK



COMMUNITY BACK



Disclaimer: This document is intended for estimation purposes only. The information contained herein is subject to change and may be modified during the course of construction. The developer reserves the right to make adjustments as necessary without prior notice. Any discrepancies or variations that arise during the construction process will be addressed and resolved in accordance with the project's requirements and best practices.

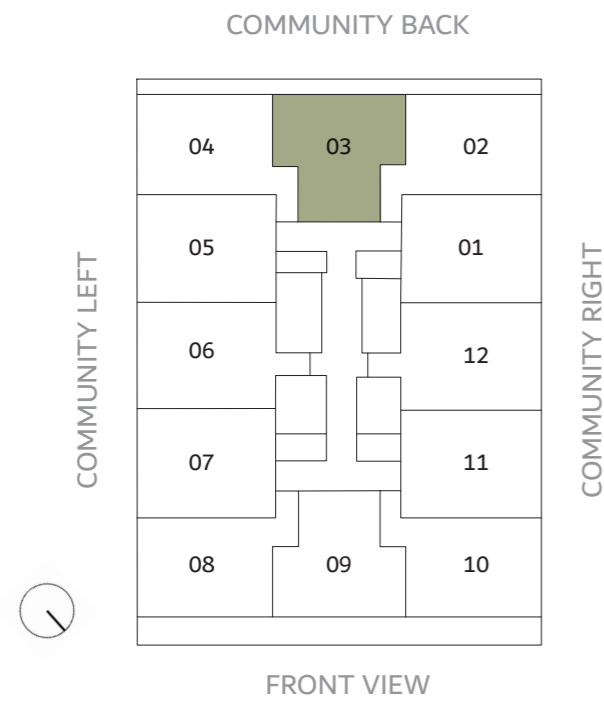


THE CUBE

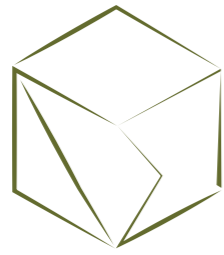
RESIDENCES

1 BEDROOM -TYPE 3

LEVEL 4	UNIT 403
SUITE AREA	653.37FT ²
BALCONY	98.17 FT ²
TOTAL AREA	751.54 FT ²



Disclaimer: This document is intended for estimation purposes only. The information contained herein is subject to change and may be modified during the course of construction. The developer reserves the right to make adjustments as necessary without prior notice. Any discrepancies or variations that arise during the construction process will be addressed and resolved in accordance with the project's requirements and best practices.



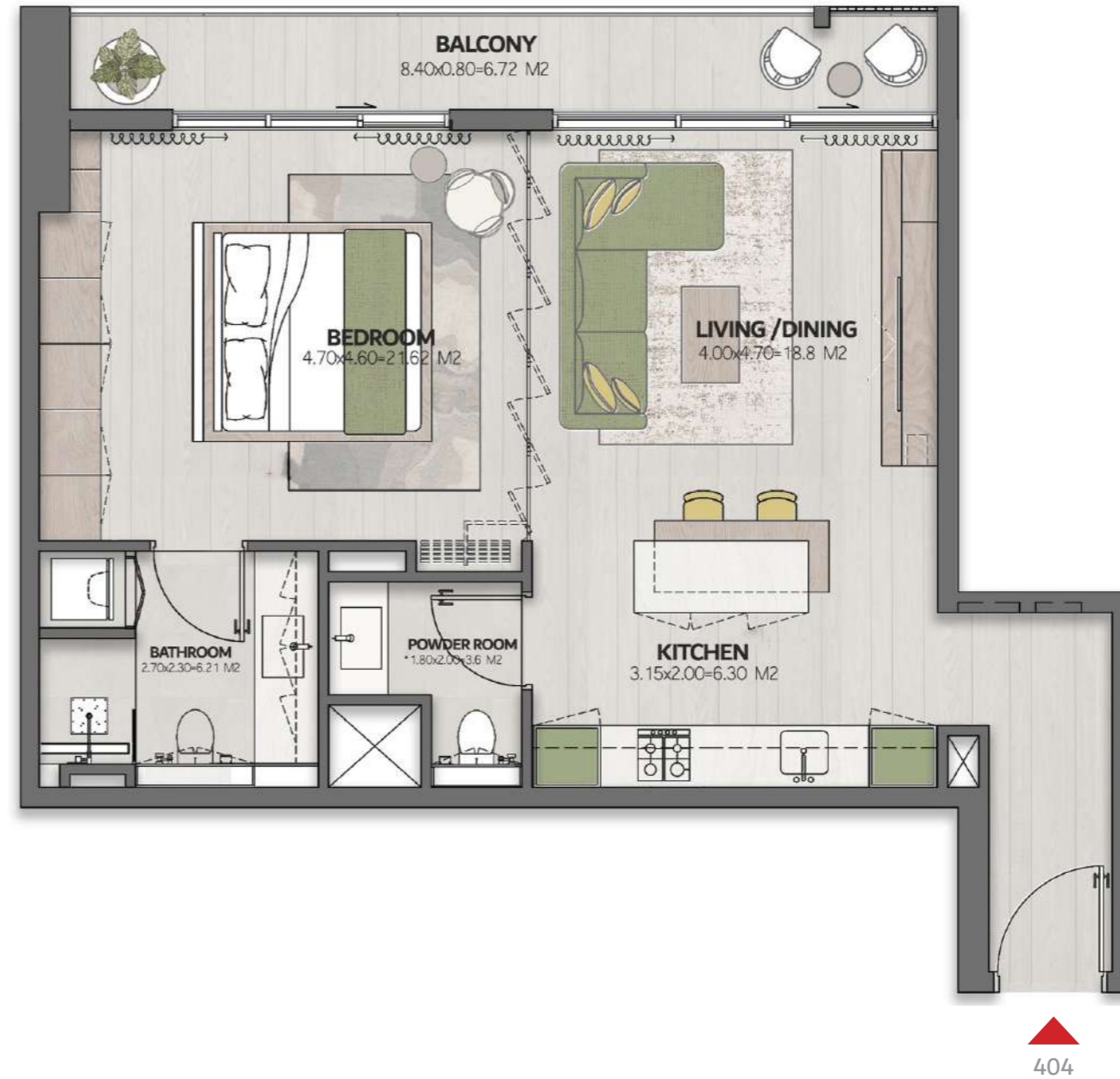
THE CUBE

RESIDENCES

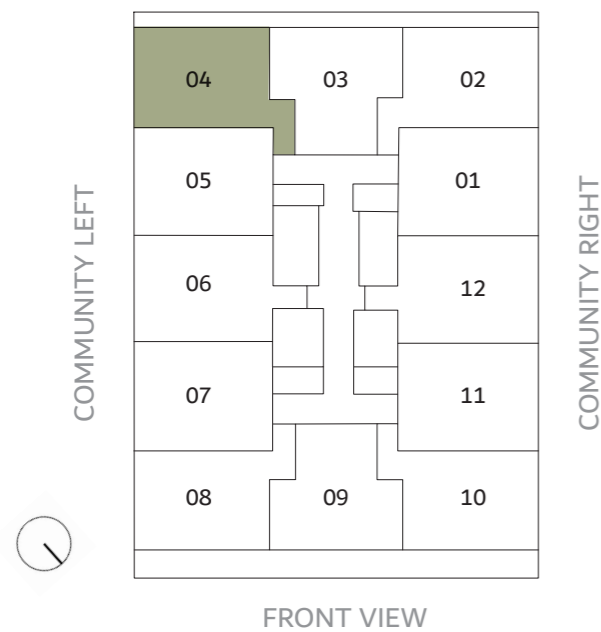
1 BEDROOM -TYPE 2

LEVEL 4	UNIT 404
SUITE AREA	689FT ²
BALCONY	96.01 FT ²
TOTAL AREA	785.01 FT ²

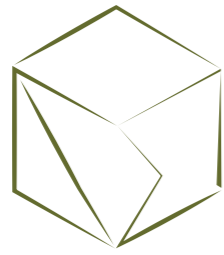
COMMUNITY BACK



COMMUNITY BACK



Disclaimer: This document is intended for estimation purposes only. The information contained herein is subject to change and may be modified during the course of construction. The developer reserves the right to make adjustments as necessary without prior notice. Any discrepancies or variations that arise during the construction process will be addressed and resolved in accordance with the project's requirements and best practices.

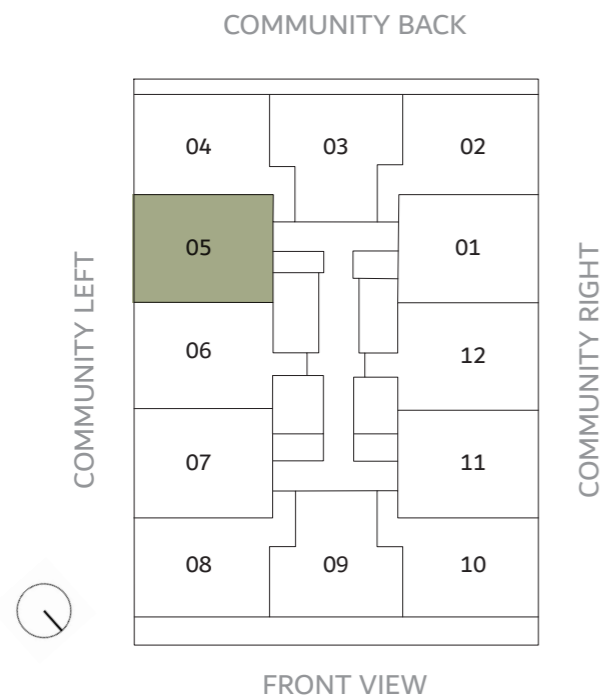


THE CUBE

RESIDENCES

1 BEDROOM -TYPE 1

LEVEL 4	UNIT 405
SUITE AREA	639.91 FT ²
BALCONY	68.24FT ²
TOTAL AREA	708.16FT ²

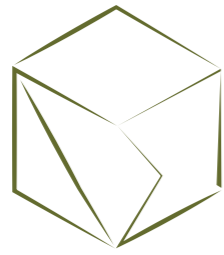


COMMUNITY LEFT



405

Disclaimer: This document is intended for estimation purposes only. The information contained herein is subject to change and may be modified during the course of construction. The developer reserves the right to make adjustments as necessary without prior notice. Any discrepancies or variations that arise during the construction process will be addressed and resolved in accordance with the project's requirements and best practices.

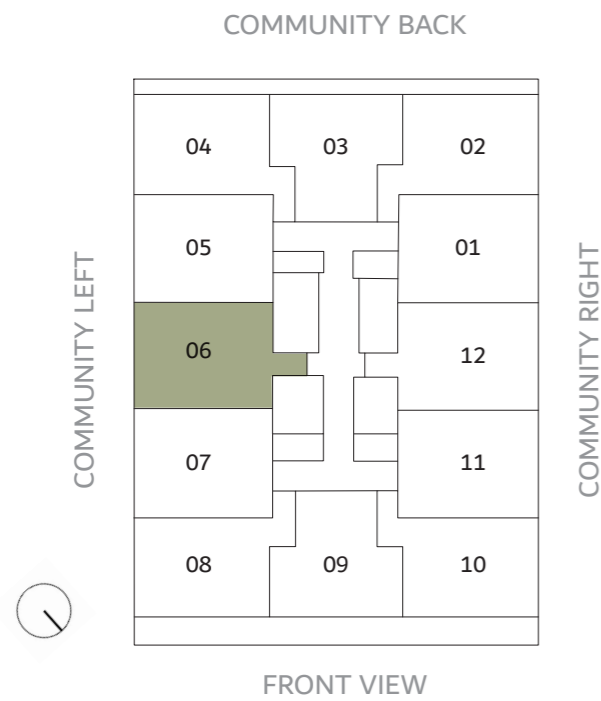


THE CUBE

RESIDENCES

1 BEDROOM -TYPE 1

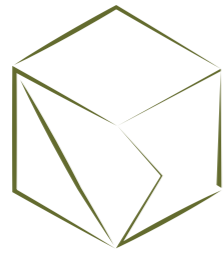
LEVEL 4	UNIT 406
SUITE AREA	681.57 FT ²
BALCONY	68.14FT ²
TOTAL AREA	749.71FT ²



COMMUNITY LEFT



Disclaimer: This document is intended for estimation purposes only. The information contained herein is subject to change and may be modified during the course of construction. The developer reserves the right to make adjustments as necessary without prior notice. Any discrepancies or variations that arise during the construction process will be addressed and resolved in accordance with the project's requirements and best practices.

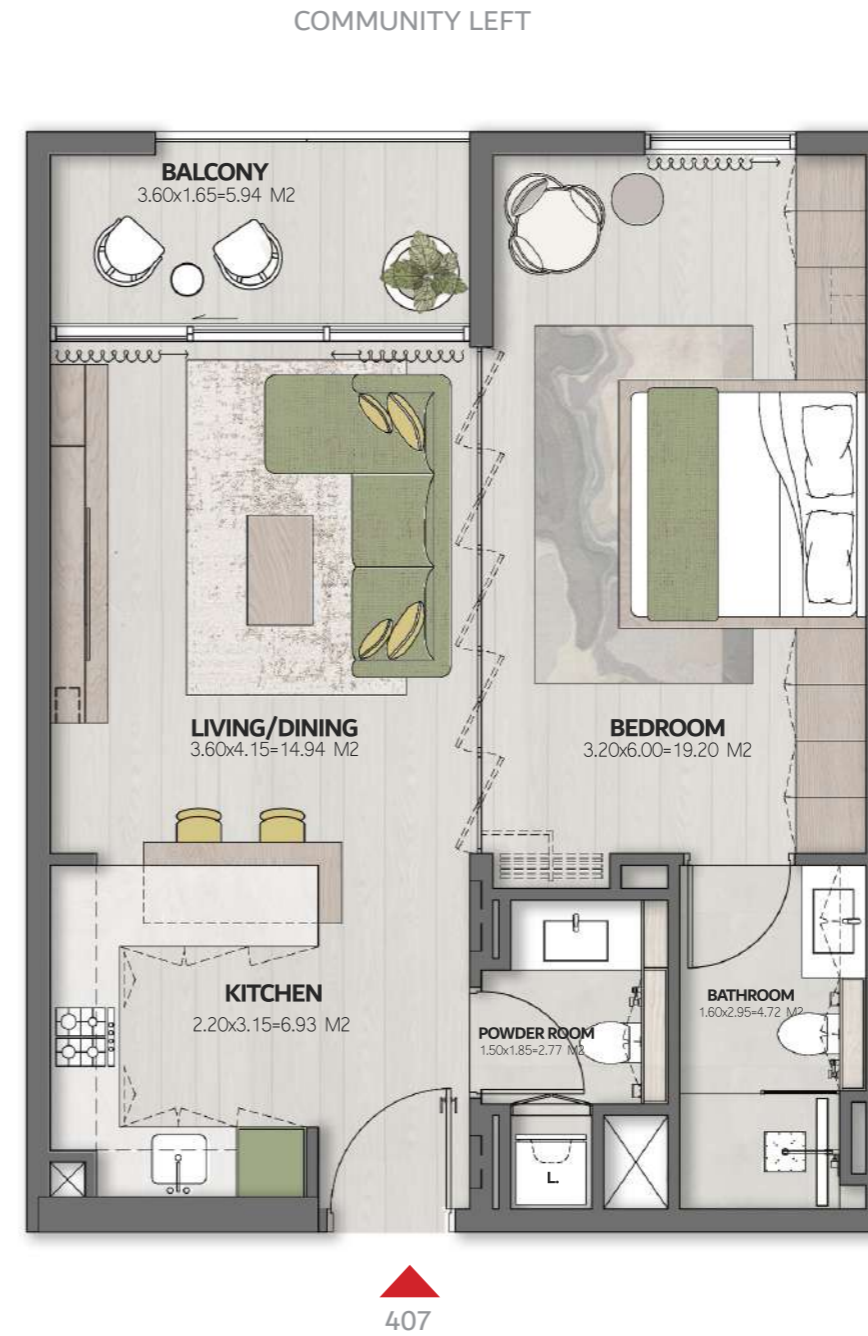
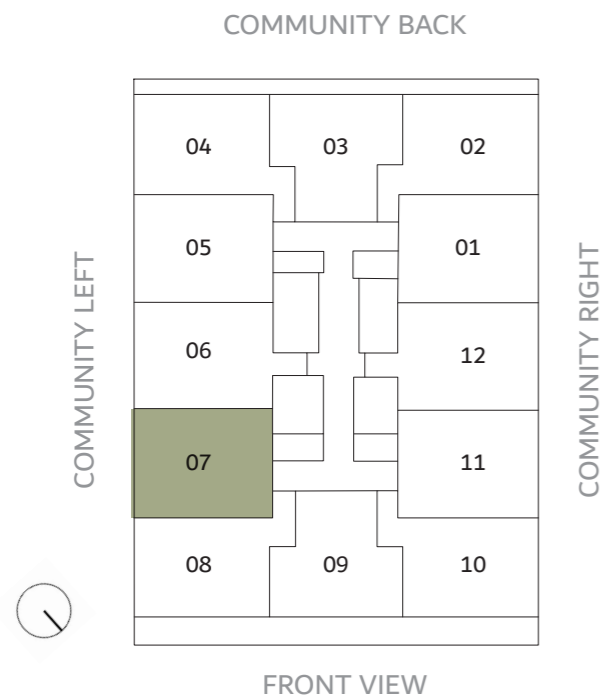


THE CUBE

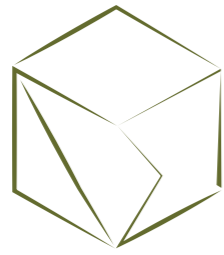
RESIDENCES

1 BEDROOM -TYPE 1

LEVEL 4	UNIT 407
SUITE AREA	639.91 FT ²
BALCONY	68.24FT ²
TOTAL AREA	708.16FT ²



Disclaimer: This document is intended for estimation purposes only. The information contained herein is subject to change and may be modified during the course of construction. The developer reserves the right to make adjustments as necessary without prior notice. Any discrepancies or variations that arise during the construction process will be addressed and resolved in accordance with the project's requirements and best practices.



THE CUBE

RESIDENCES

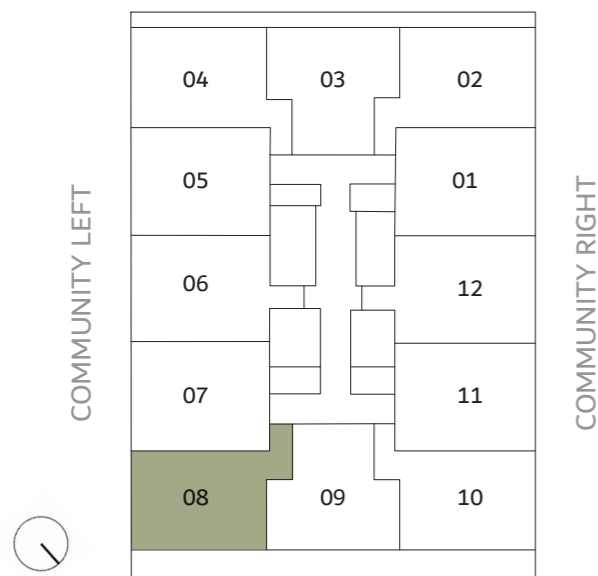
1 BEDROOM -TYPE 2

LEVEL 4	UNIT 408
SUITE AREA	689 FT ²
BALCONY	175.3 FT ²
TOTAL AREA	864.34 FT ²

FRONT VIEW

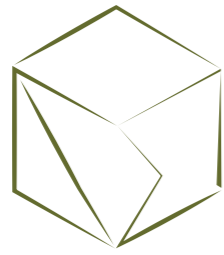


COMMUNITY BACK



FRONT VIEW

Disclaimer: This document is intended for estimation purposes only. The information contained herein is subject to change and may be modified during the course of construction. The developer reserves the right to make adjustments as necessary without prior notice. Any discrepancies or variations that arise during the construction process will be addressed and resolved in accordance with the project's requirements and best practices.

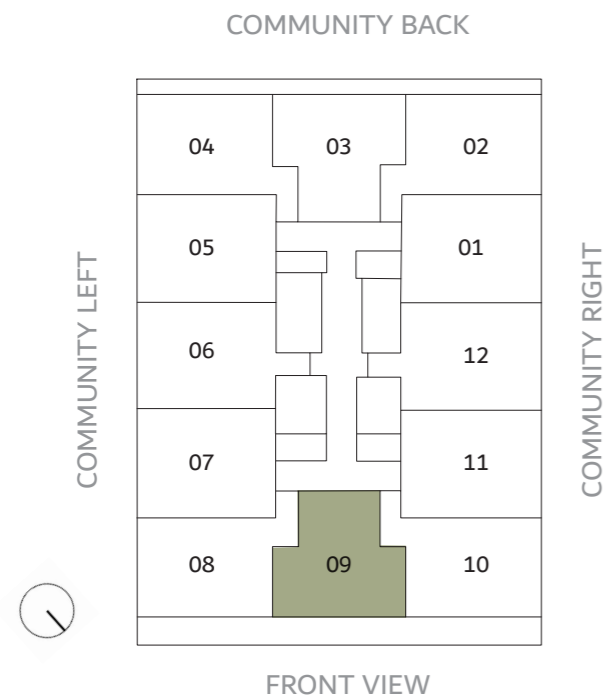


THE CUBE

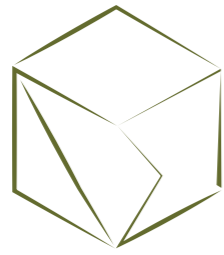
RESIDENCES

1 BEDROOM -TYPE 3

LEVEL 4	UNIT 409
SUITE AREA	653.37FT ²
BALCONY	177.80 FT ²
TOTAL AREA	831.19FT ²



Disclaimer: This document is intended for estimation purposes only. The information contained herein is subject to change and may be modified during the course of construction. The developer reserves the right to make adjustments as necessary without prior notice. Any discrepancies or variations that arise during the construction process will be addressed and resolved in accordance with the project's requirements and best practices.



THE CUBE

RESIDENCES

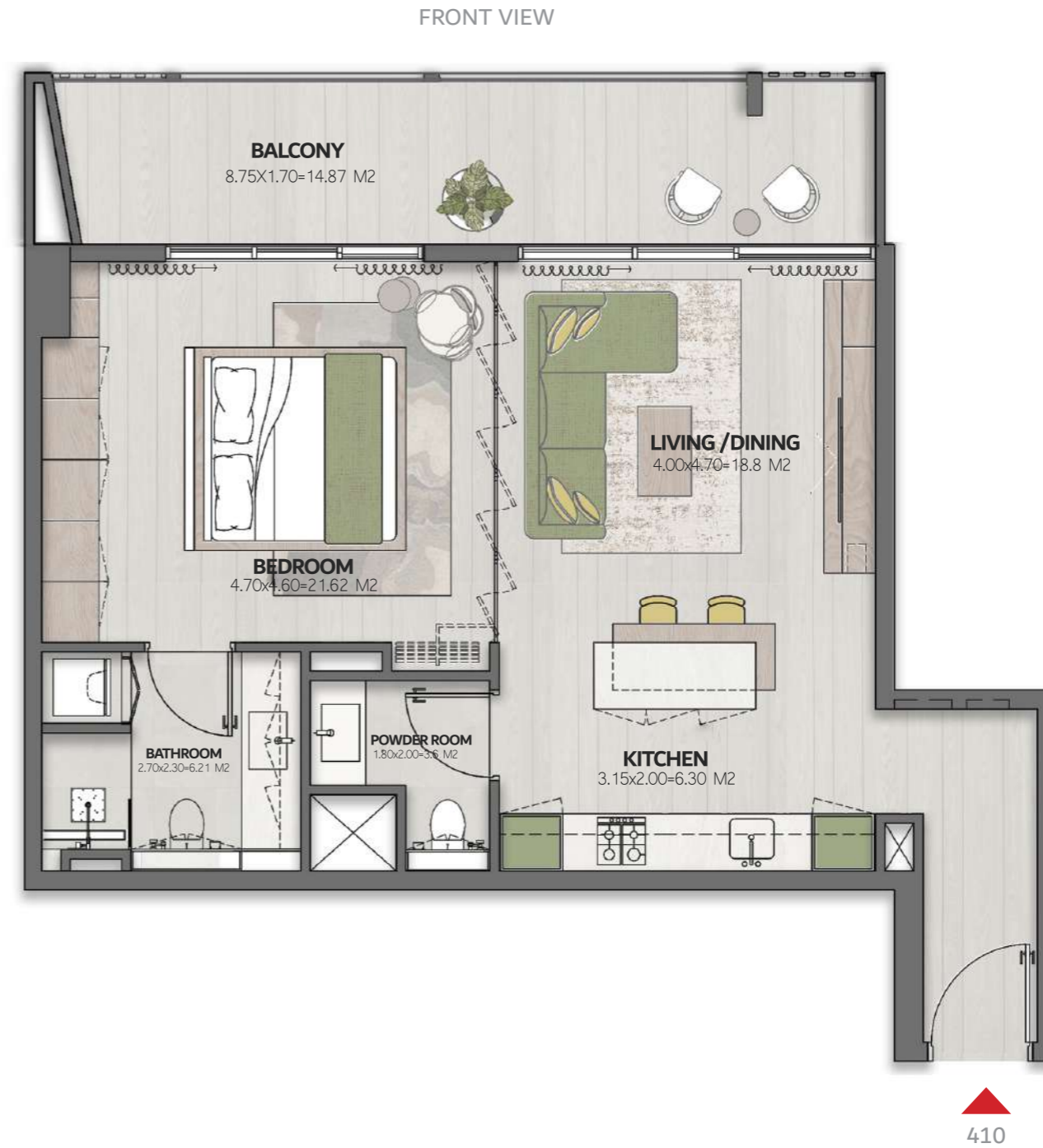
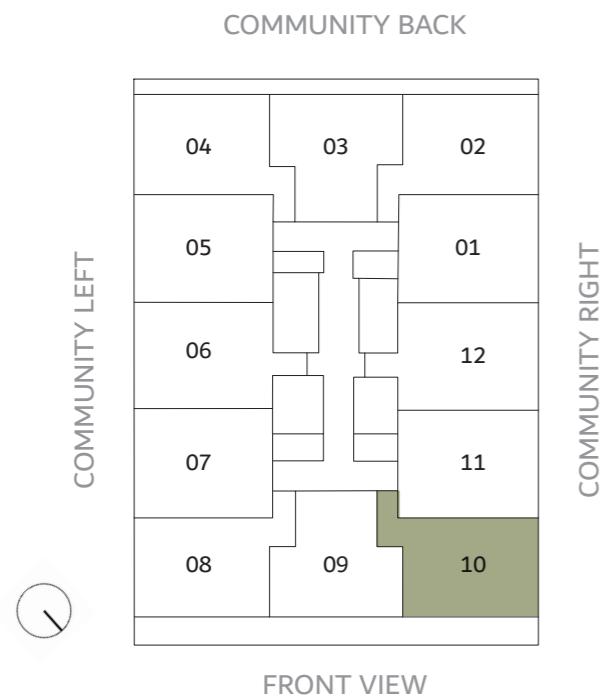
1 BEDROOM -TYPE 2

LEVEL 4 UNIT 410

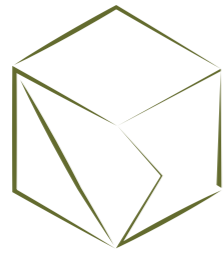
SUITE AREA 689 FT²

BALCONY 175.3 FT²

TOTAL AREA 864.34 FT²



Disclaimer: This document is intended for estimation purposes only. The information contained herein is subject to change and may be modified during the course of construction. The developer reserves the right to make adjustments as necessary without prior notice. Any discrepancies or variations that arise during the construction process will be addressed and resolved in accordance with the project's requirements and best practices.

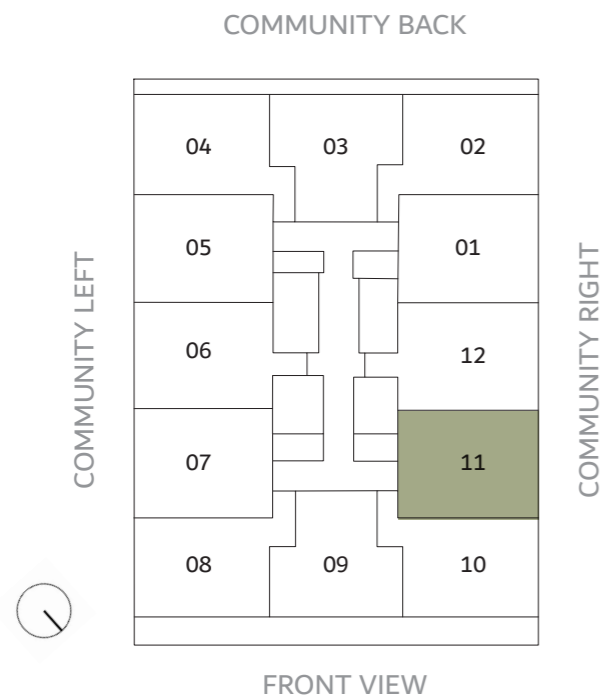


THE CUBE

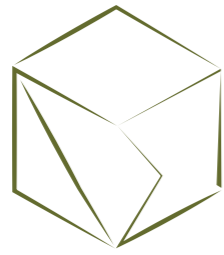
RESIDENCES

1 BEDROOM -TYPE 1

LEVEL 4	UNIT 411
SUITE AREA	639.91 FT ²
BALCONY	68.24FT ²
TOTAL AREA	708.16FT ²



Disclaimer: This document is intended for estimation purposes only. The information contained herein is subject to change and may be modified during the course of construction. The developer reserves the right to make adjustments as necessary without prior notice. Any discrepancies or variations that arise during the construction process will be addressed and resolved in accordance with the project's requirements and best practices.

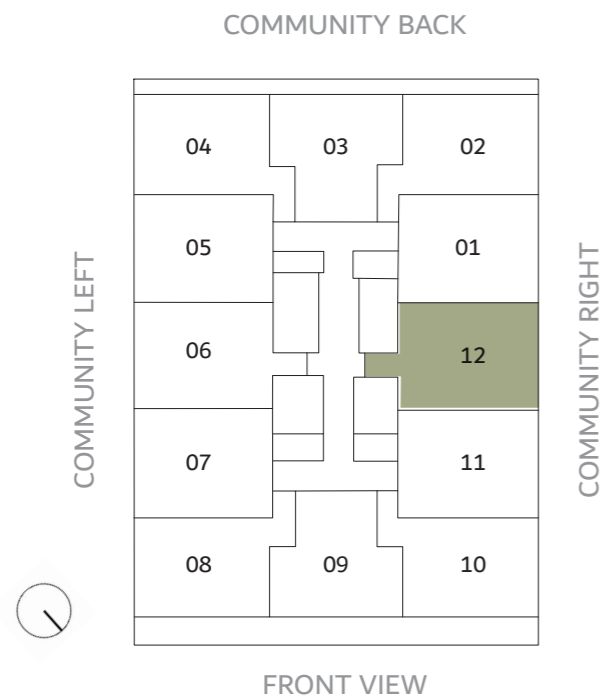


THE CUBE

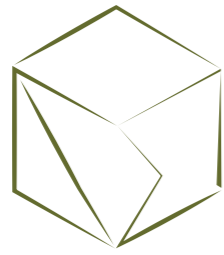
RESIDENCES

1 BEDROOM -TYPE 1

LEVEL 4	UNIT 412
SUITE AREA	681.57 FT ²
BALCONY	68.14FT ²
TOTAL AREA	749.71FT ²



Disclaimer: This document is intended for estimation purposes only. The information contained herein is subject to change and may be modified during the course of construction. The developer reserves the right to make adjustments as necessary without prior notice. Any discrepancies or variations that arise during the construction process will be addressed and resolved in accordance with the project's requirements and best practices.

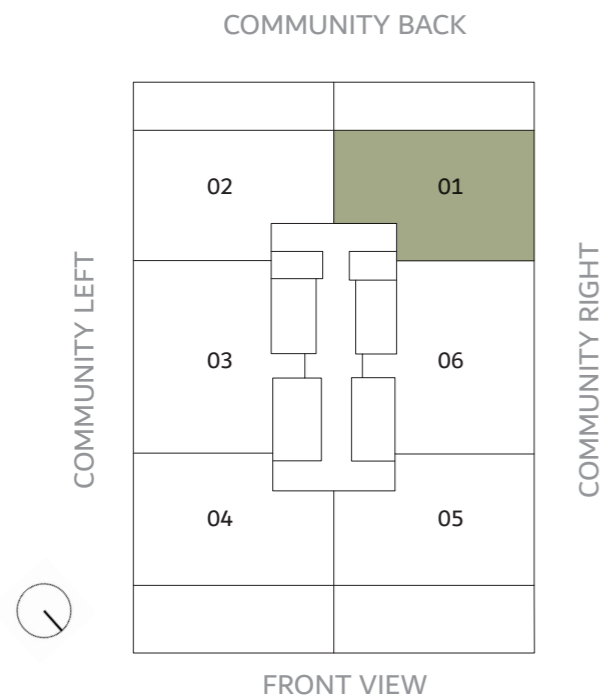


THE CUBE

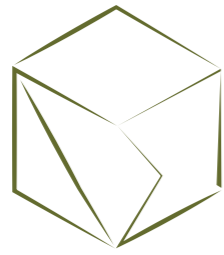
RESIDENCES

2 BEDROOM -TYPE 1

LEVEL 5	UNIT 501
SUITE AREA	1126.8 FT ²
BALCONY	451.1FT ²
TOTAL AREA	1577.9FT ²



Disclaimer: This document is intended for estimation purposes only. The information contained herein is subject to change and may be modified during the course of construction. The developer reserves the right to make adjustments as necessary without prior notice. Any discrepancies or variations that arise during the construction process will be addressed and resolved in accordance with the project's requirements and best practices.

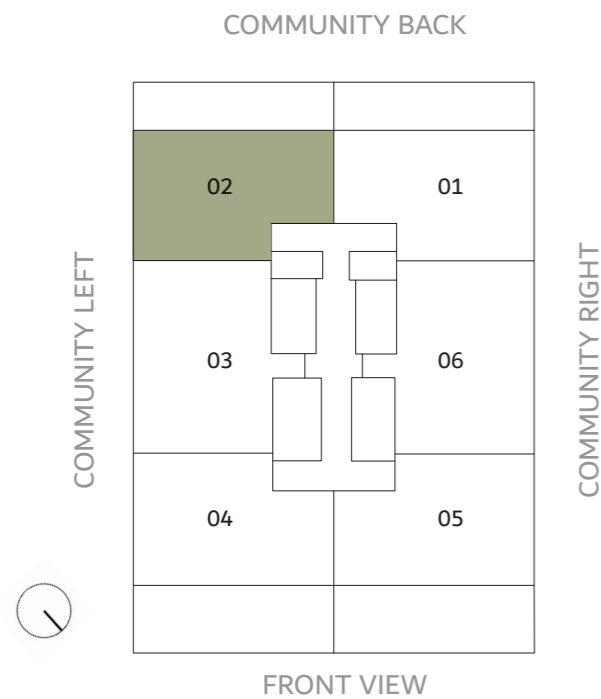


THE CUBE

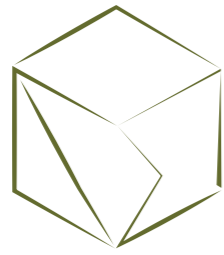
RESIDENCES

2 BEDROOM -TYPE 1

LEVEL 5	UNIT 502
SUITE AREA	1126.8 FT ²
BALCONY	451.1 FT ²
TOTAL AREA	1577.9 FT ²



Disclaimer: This document is intended for estimation purposes only. The information contained herein is subject to change and may be modified during the course of construction. The developer reserves the right to make adjustments as necessary without prior notice. Any discrepancies or variations that arise during the construction process will be addressed and resolved in accordance with the project's requirements and best practices.

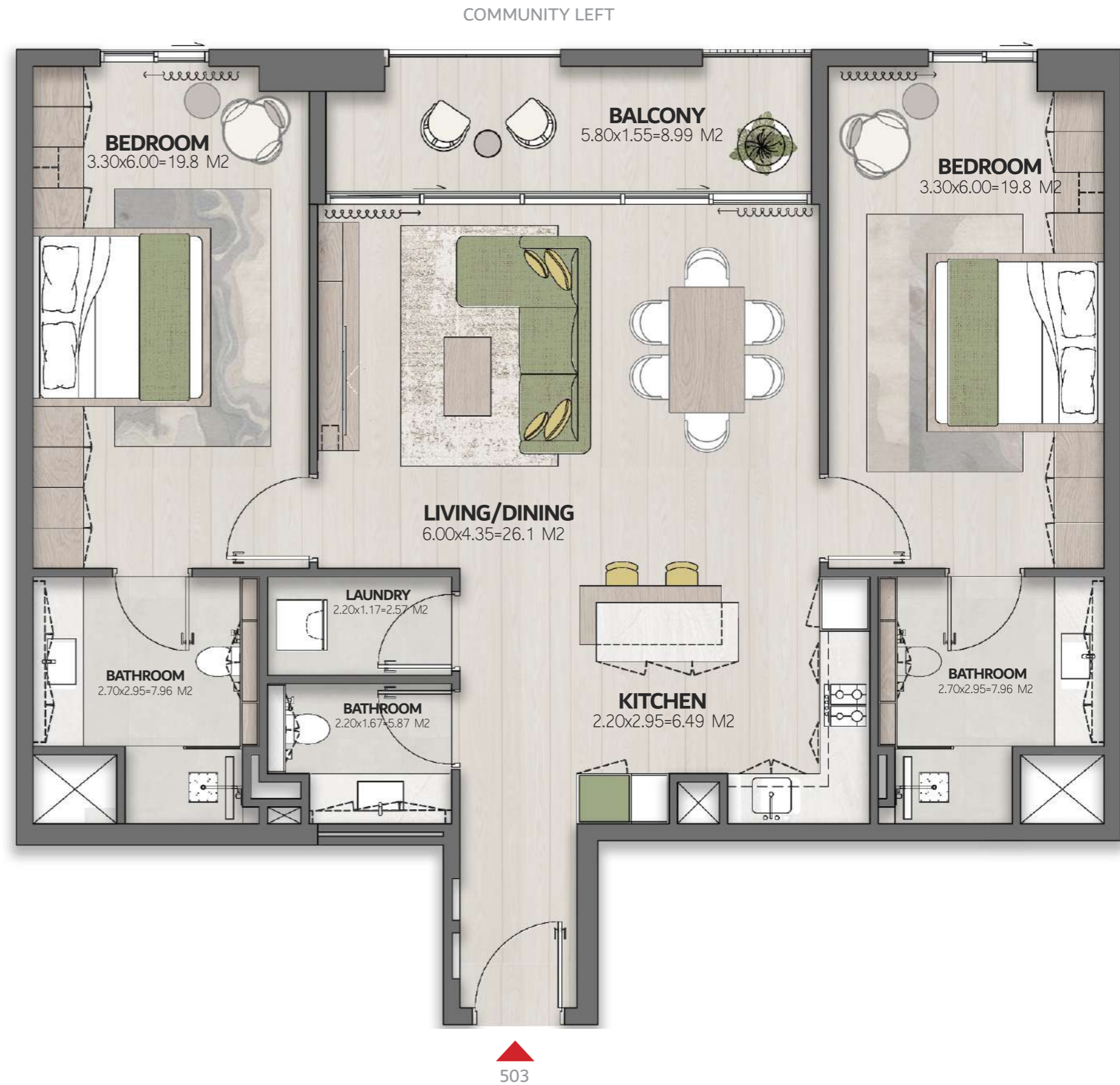
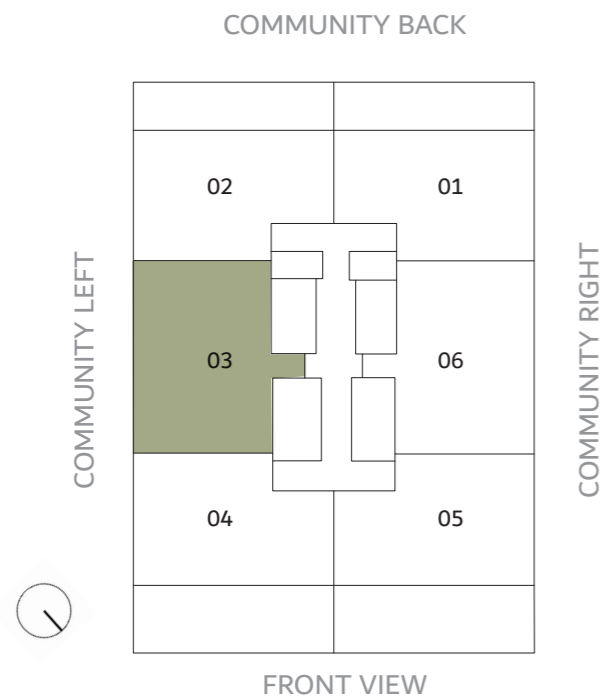


THE CUBE

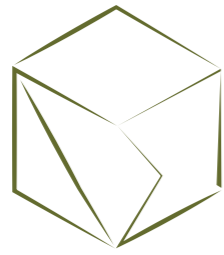
RESIDENCES

2 BEDROOM -TYPE 2

LEVEL 5	UNIT 503
SUITE AREA	1208.9 FT ²
BALCONY	106.6FT ²
TOTAL AREA	1315.5FT ²



Disclaimer: This document is intended for estimation purposes only. The information contained herein is subject to change and may be modified during the course of construction. The developer reserves the right to make adjustments as necessary without prior notice. Any discrepancies or variations that arise during the construction process will be addressed and resolved in accordance with the project's requirements and best practices.



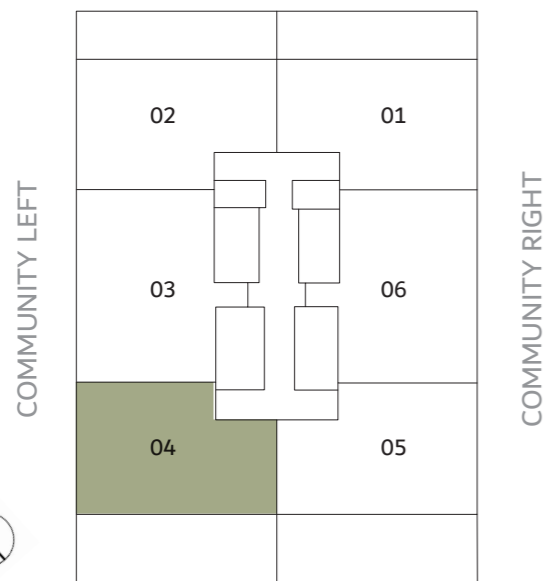
THE CUBE

RESIDENCES

2 BEDROOM -TYPE 1

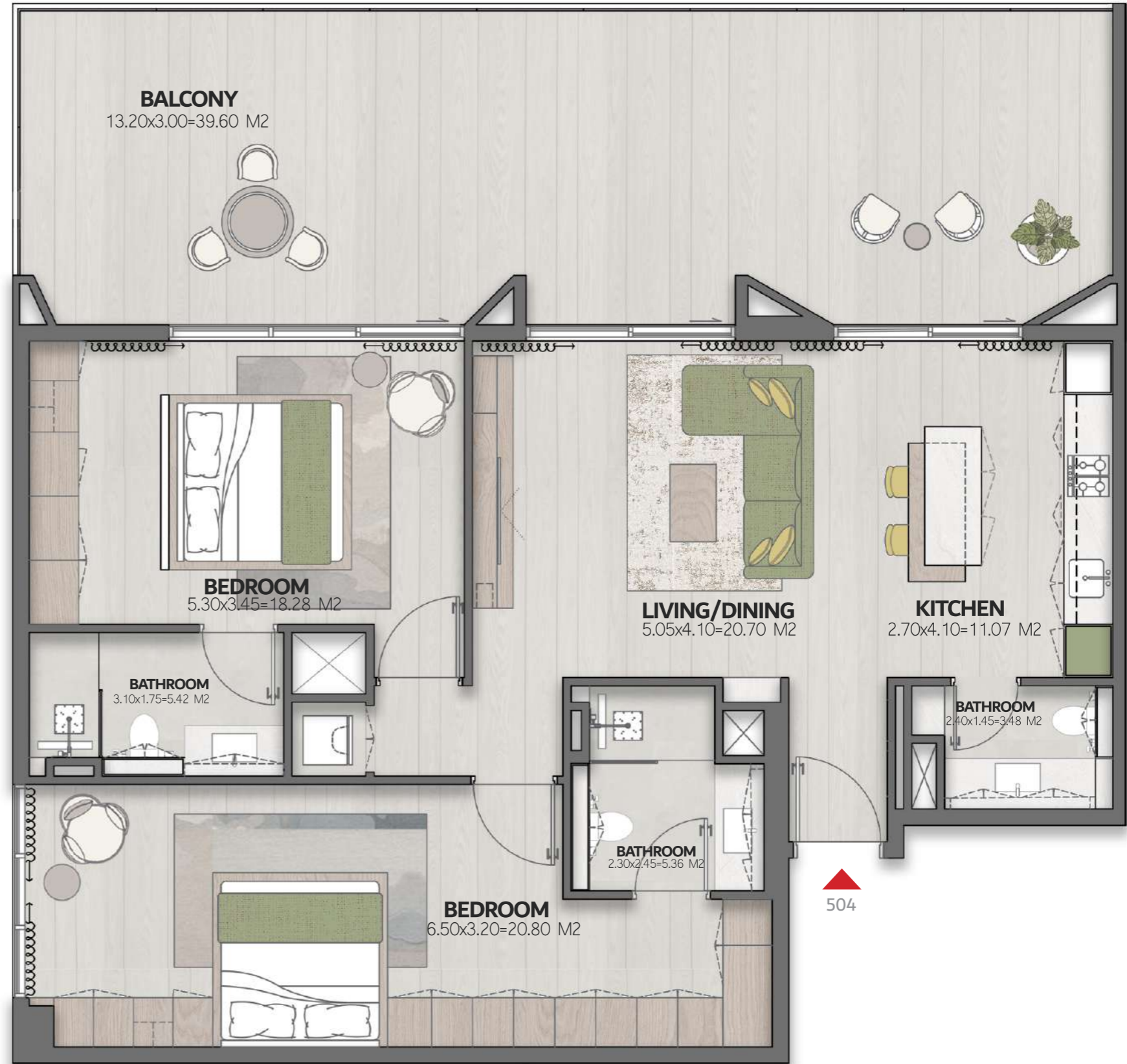
LEVEL 5	UNIT 504
SUITE AREA	1126.8 FT ²
BALCONY	568.2 FT ²
TOTAL AREA	1695 FT ²

COMMUNITY BACK

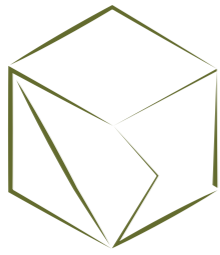


FRONT VIEW

FRONT VIEW



Disclaimer: This document is intended for estimation purposes only. The information contained herein is subject to change and may be modified during the course of construction. The developer reserves the right to make adjustments as necessary without prior notice. Any discrepancies or variations that arise during the construction process will be addressed and resolved in accordance with the project's requirements and best practices.



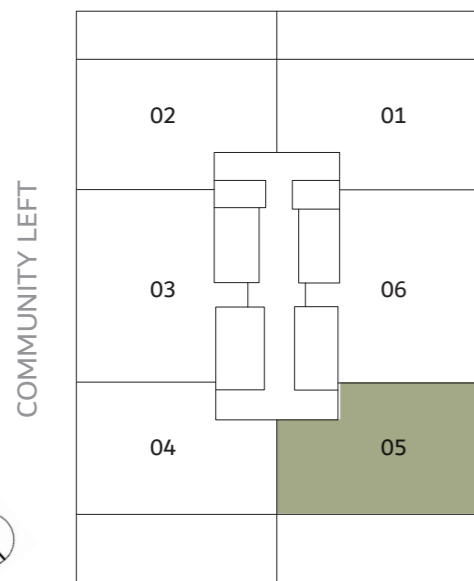
THE CUBE

RESIDENCES

2 BEDROOM -TYPE 1

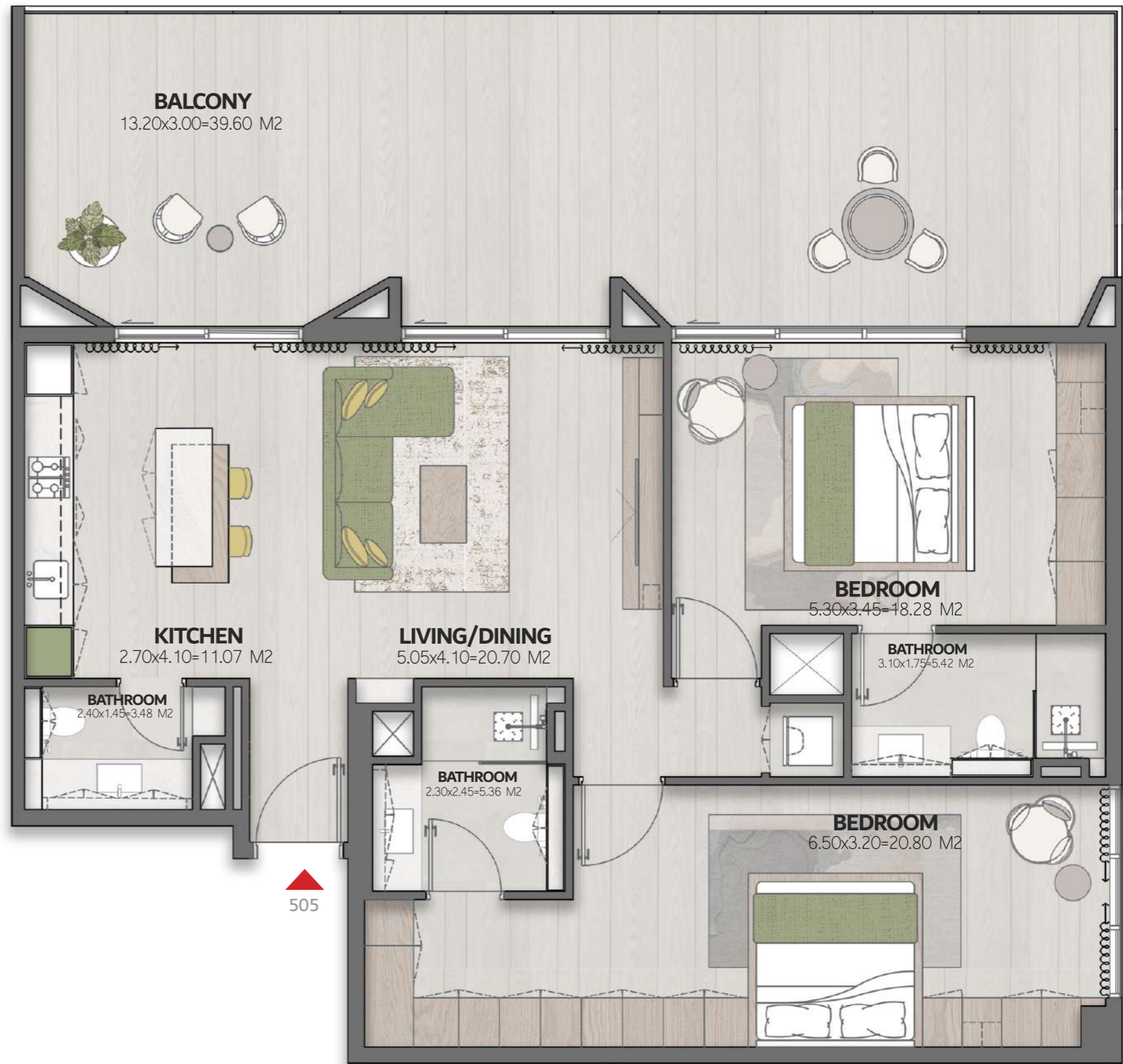
LEVEL 5	UNIT 505
SUITE AREA	1126.8 FT ²
BALCONY	568.2 FT ²
TOTAL AREA	1695 FT ²

COMMUNITY BACK

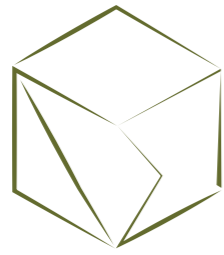


FRONT VIEW

FRONT VIEW



Disclaimer: This document is intended for estimation purposes only. The information contained herein is subject to change and may be modified during the course of construction. The developer reserves the right to make adjustments as necessary without prior notice. Any discrepancies or variations that arise during the construction process will be addressed and resolved in accordance with the project's requirements and best practices.



THE CUBE

RESIDENCES

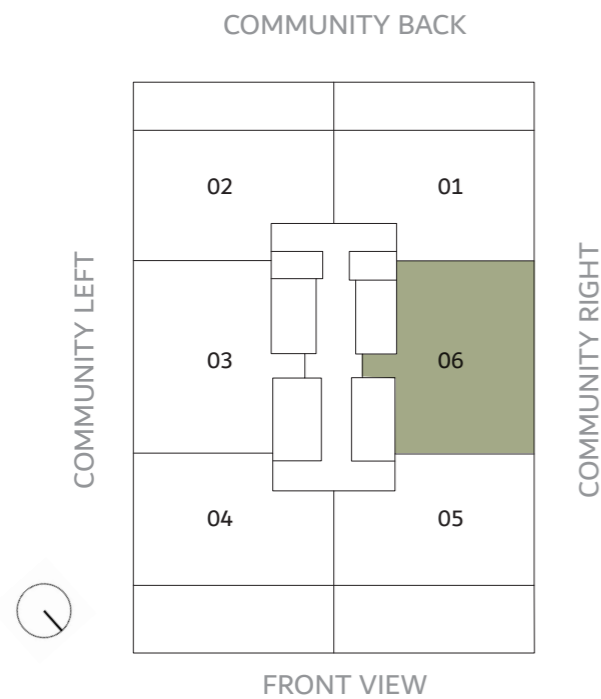
2 BEDROOM -TYPE 2

LEVEL 5 UNIT 506

SUITE AREA 1210.5 FT²

BALCONY 106.6 FT²

TOTAL AREA 1317.1 FT²



Disclaimer: This document is intended for estimation purposes only. The information contained herein is subject to change and may be modified during the course of construction. The developer reserves the right to make adjustments as necessary without prior notice. Any discrepancies or variations that arise during the construction process will be addressed and resolved in accordance with the project's requirements and best practices.