

THE CUBE
RESIDENCES

Inspiration In Every Angle



Concept

The Cube, a three-dimensional symbol of **stability and balance**, is more than just a residential building—it's a dynamic community in **Dubai's MBR District 11**. Designed for the youth, artists, entrepreneurs & innovators, The Cube fosters creativity & collaboration in a space where **smart home technology & adaptable furniture** enhance everyday living. Blending geometric perfection with modern convenience, The Cube is a hub for limitless potential, **where innovative minds come together to thrive.**





About AMWAJ Development

The developer of The Cube Residences is **Amwaj Development**, a premier real estate developer in the UAE with a mission to elevate living standards by creating communities that cultivate experiences, innovation & offer eco-friendly development solutions. Amwaj Development seeks to redefine the meaning of urban living in Dubai while ensuring premium quality products and a smooth client journey.



Prime Location Mohammed Bin Rashid City District II

MBR District II reflects the visionary leadership of His Highness Sheikh Mohammed Bin Rashid Al Maktoum, UAE Vice President, Prime Minister, and Ruler of Dubai. This thriving district has become a symbol of Dubai's commitment to innovation and sustainable urban development, offering a harmonious blend of modern living and lush green landscapes. MBR District II elevates Dubai's stature on the world stage while ensuring a superior quality of life for its residents, with its strategic location and exceptional amenities.

Connecting You To The City Mohammed Bin Rashid City District II

12
Minutes

Burj Khalifa

15
Minutes

Downtown Dubai

15
Minutes

Dubai Mall

20
Minutes

Dubai Airport

25
Minutes

Palm Jumeirah

30
Minutes

Dubai Marina

25
Minutes

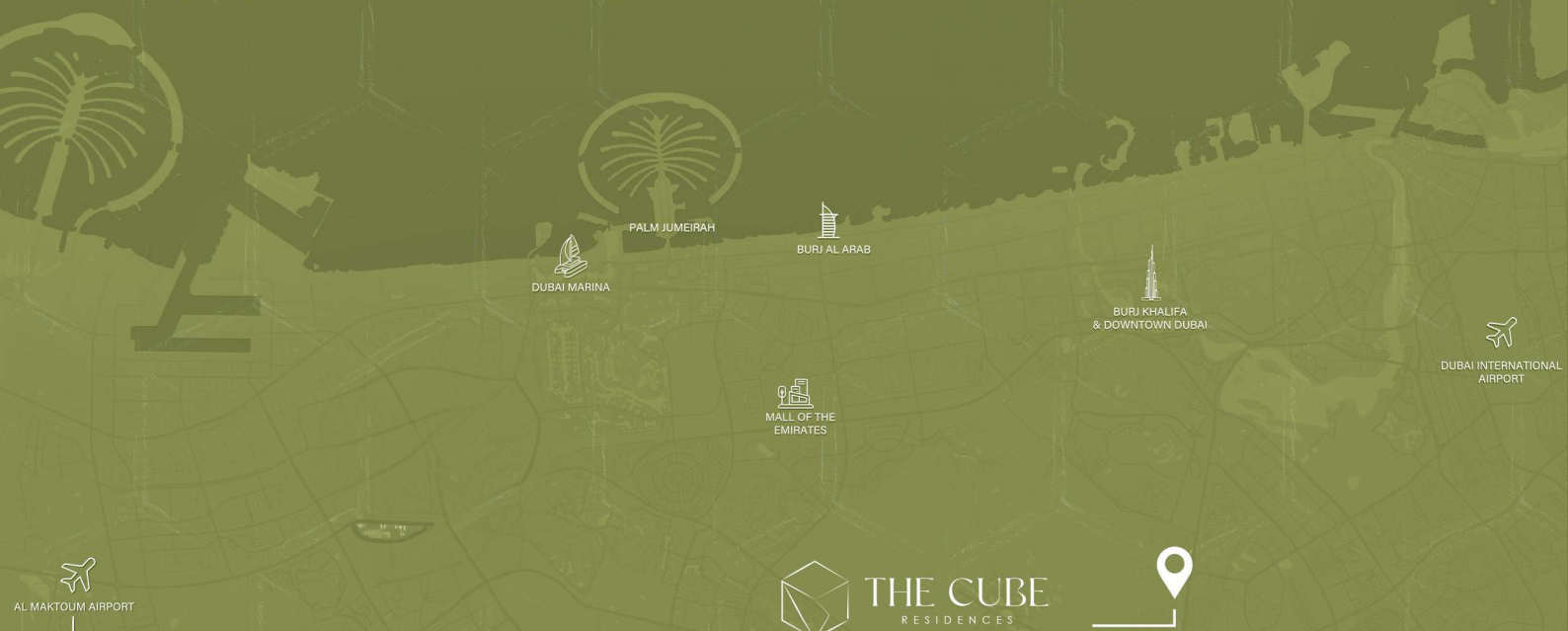
Burj Al Arab

25
Minutes

Mall Of The Emirates

30
Minutes

Al Maktoum Airport



DUBAI MARINA
PALM JUMEIRAH

BURJ AL ARAB

BURJ KHALIFA
& DOWNTOWN DUBAI

DUBAI INTERNATIONAL
AIRPORT

MALL OF THE
EMIRATES

AL MAKTOUM AIRPORT

 **THE CUBE**
RESIDENCES



Geometric
Perfection





AMWAJ



T.H.E. CUBE



H&GS



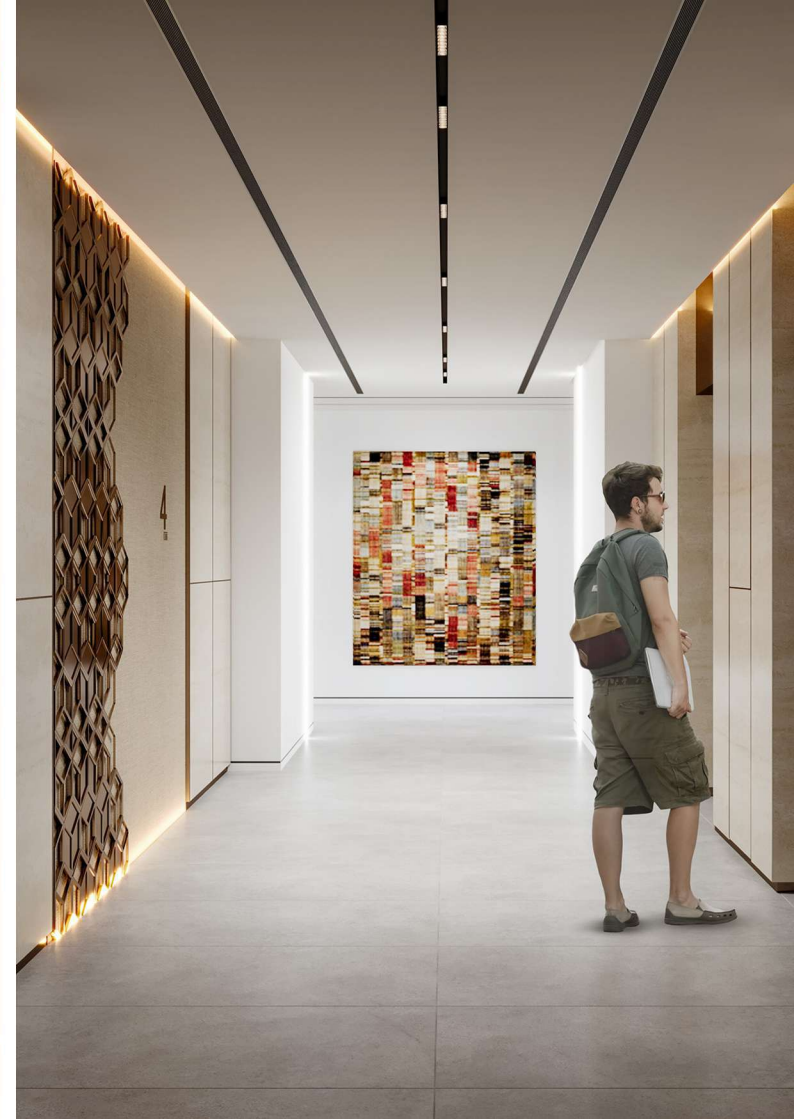
A Canvas of Comfort & Creativity

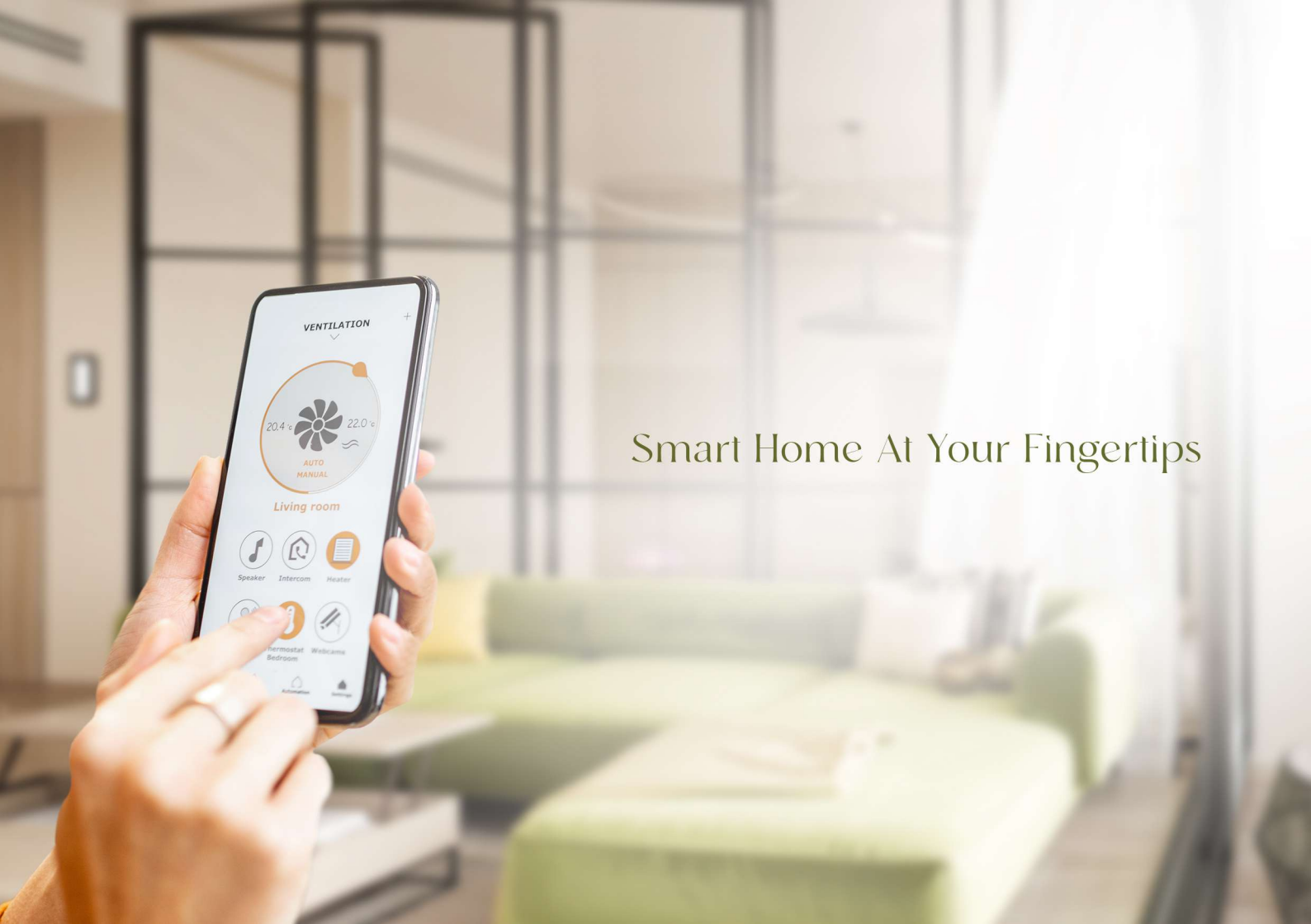





THE CUBE
RESIDENCES

Walk in With Prestige





Smart Home At Your Fingertips

Fold Away. Flexible Spaces





Smart
Spaces





Expand Your Table





Unfold and
Work With A View







Kick Off
Your Morning





Create

collaborate & thrive at
the Work Space Lounge



Fuel

your day at the
Coffee Corner



Enjoy

endless fun & excitement
at the Gaming Room



Splash

into relaxation at the
Rooftop Pool & Lounge



Relax

rejuvenate and revive
at the Sauna



Progress

& feel the burn at the
Fitness Centre



Live

smarter, with a touch at your
Smart home automation



Adapt

smart furniture that
fits your lifestyle.



Play

at the Arcade & recharge
at the vending machine



Stay

secure always with our
24/7 Security

A high-angle, top-down photograph of a woman swimming in a pool. She is seen from behind, with her arms raised and hands open, splashing water. Her hair is pulled back in a ponytail. The water is a vibrant blue with many white bubbles and ripples. The lighting is bright, creating a sense of a sunny day.

Where Every Day
Feels Like a Vacation

Catch The Sunset





THE CURVE
Rooftop



Meaningful Moments Together





Chill and Connect







Game It Up





Your Fitness Journey
Starts Here



Stay Fit



LET'S GO
FORWARD

FLOOR PLANS

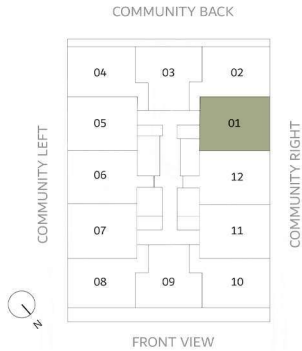


THE CUBE

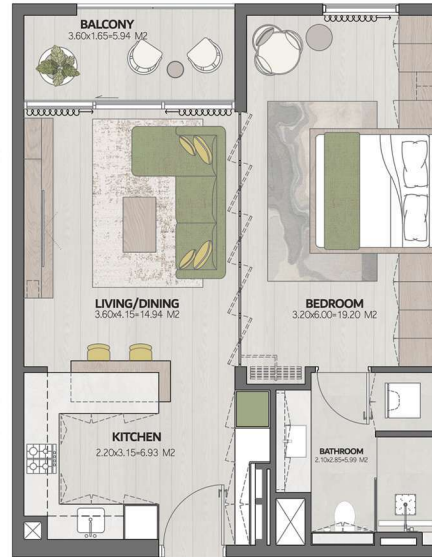
RESIDENCES

1 BEDROOM -TYPE 1

SUITE AREA	639.91 - 682.54 FT ²
BALCONY	68.14 - 68.24 FT ²
TOTAL AREA	708.48 - 750.68 FT ²



COMMUNITY RIGHT



Disclaimer: all pictures, plans, layouts, information, data and details included in this brochure are indicative only and may change at any time up to the final 'as built' status in accordance with the final designs of the project, regulatory approvals and planning permissions.



THE CUBE

RESIDENCES

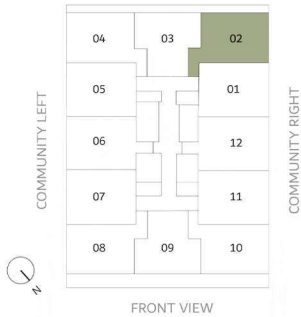
1 BEDROOM -TYPE 2

SUITE AREA	689 FT ²
BALCONY	96.01 - 175.34 FT ²
TOTAL AREA	785.01 - 864.34 FT ²

COMMUNITY BACK



COMMUNITY BACK



Disclaimer: all pictures, plans, layouts, information, data and details included in this brochure are indicative only and may change at any time up to the final 'as built status in accordance with the final designs of the project, regulatory approvals and planning permissions

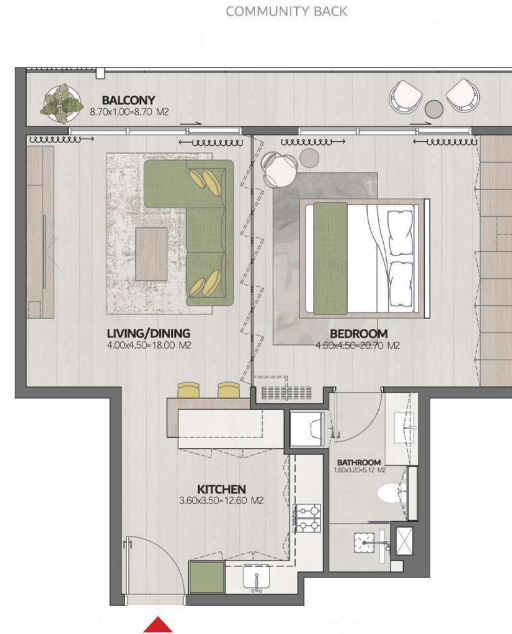
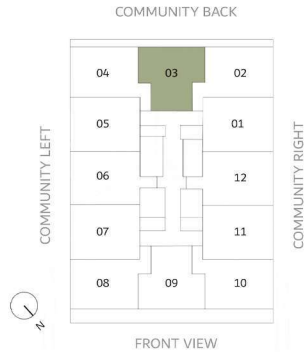


THE CUBE

RESIDENCES

1 BEDROOM - TYPE 3

SUITE AREA	653.37 FT ²
BALCONY	98.17 - 177.82 FT ²
TOTAL AREA	751.54 - 831.19 FT ²



Disclaimer: all pictures, plans, layouts, information, data and details included in this brochure are indicative only and may change at any time up to the final 'as built' status in accordance with the final designs of the project, regulatory approvals and planning permissions

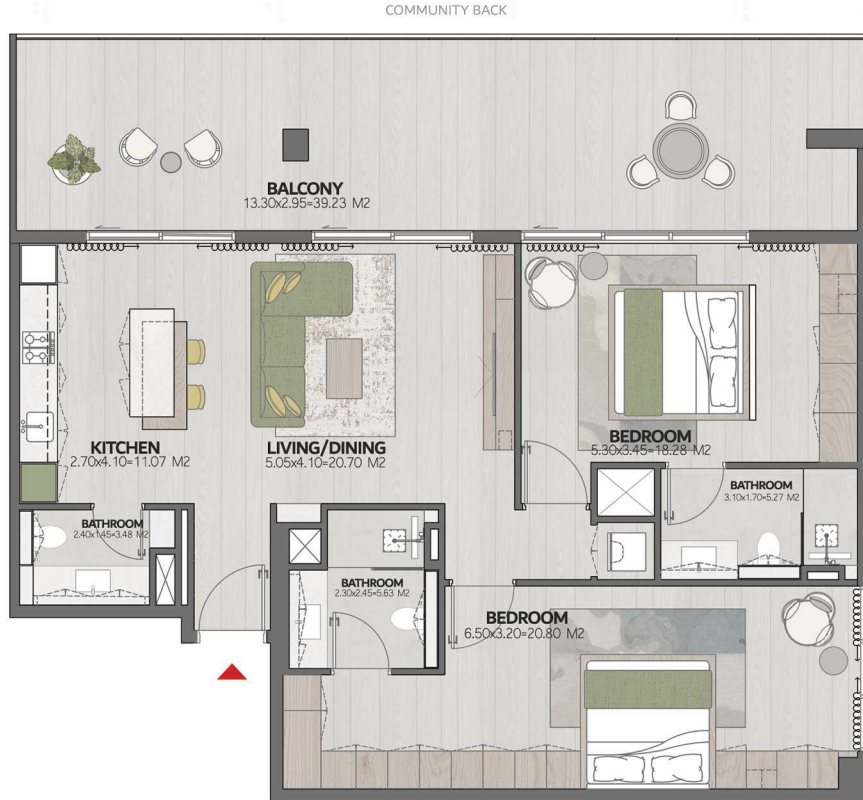
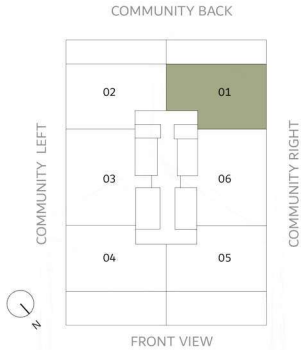


THE CUBE

RESIDENCES

2 BEDROOM -TYPE 1

SUITE AREA	1126.8 FT ²
BALCONY	451.1 - 568.23 FT ²
TOTAL AREA	1577.9 - 1695 FT ²



Disclaimer: all pictures, plans, layouts, information, data and details included in this brochure are indicative only and may change at any time up to the final 'as built status in accordance with the final designs of the project, regulatory approvals and planning permissions

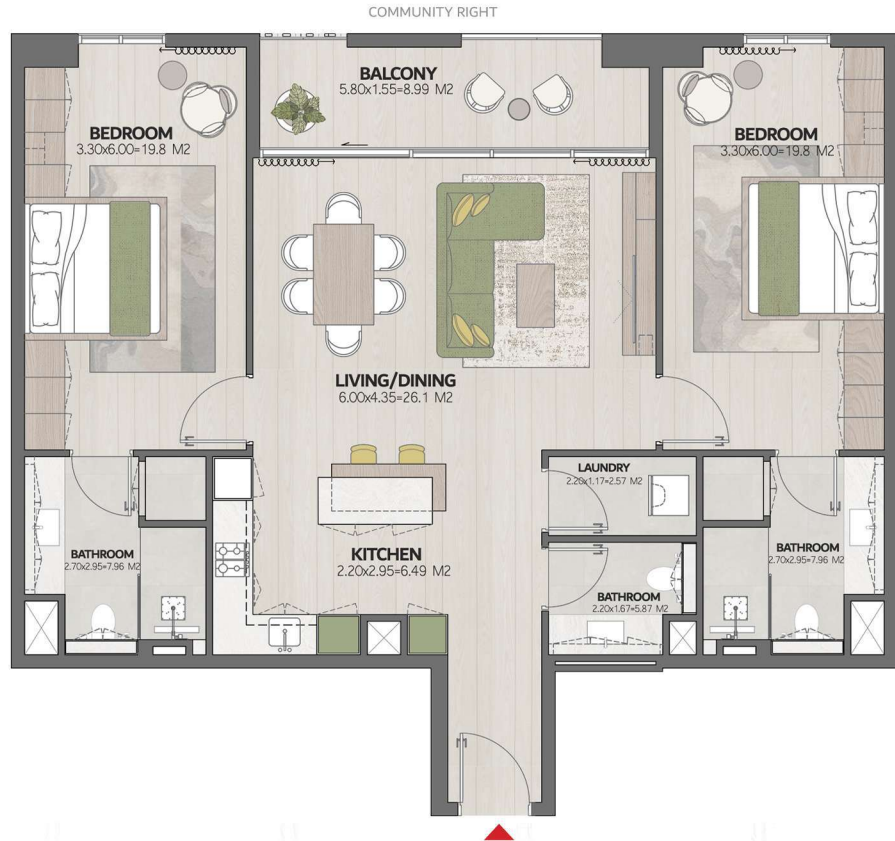
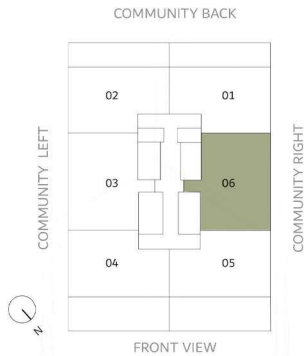


THE CUBE

RESIDENCES

2 BEDROOM -TYPE 2

SUITE AREA	1208.89- 1210.5 FT ²
BALCONY	106.6FT ²
TOTAL AREA	1315.45 - 1317.1FT ²



Disclaimer: all pictures, plans, layouts, information, data and details included in this brochure are indicative only and may change at any time up to the final 'as built status in accordance with the final designs of the project, regulatory approvals and planning permissions

Discover Your Future Apartment In



Tap on each image to experience the 360



Disclaimer: This 360° tour is intended for illustrative purposes only and showcases the layout of our 1-bedroom Type 1 apartment. Variations in size, finishes, and fixtures may occur between different units. Please refer to official floor plans for specific details.

Eager To Call The Cube Home?

Contact Our Sales Team at 058 898 0456

Or Visit us in our sales center
505, Park Heights 1, Dubai Hills, Dubai, UAE

AMWAJ
DEVELOPMENT

ZED CAPITAL
REAL ESTATE